

County Economic Vitality and Distress

2006 Report Update

Prepared by



August 2007



632 S.W. Van Buren, Suite 100, Topeka, Kansas 66603
(785) 296-1460 · fax (785) 296-1463
www.kansasinc.org · ksinc@ink.org

Stan Ahlerich, *President*

Since 1989, Kansas, Inc. has prepared an annual update detailing overall county economic vitality and distress in Kansas. Data from several economic indicators are collected on a county level and then combined into a statistical formula to produce an overall assessment score. The scores from each county are then ranked to provide an overall comparison of the vitality and distress of Kansas' counties. The 2006 report update provides the latest complete data for each economic indicator and calculates assessment scores for each county based on size and region.

While a consistent measure of decline or growth in economic vitality is difficult to construct, it is necessary for assessing an area's general strength and growth potential over a period of time. This analysis provides a comprehensive view of a county's economic condition by factoring in several statistical indicators.

We hope you will find this publication to be of value to you in the course of your work.

Sincerely,

A handwritten signature in black ink, appearing to read "Stan Ahlerich", written in a cursive style.

Stan R. Ahlerich
President

This page is intentionally left blank

TABLE OF CONTENTS

INTRODUCTION	2
KEY POINTS FROM THE 2006 REPORT UPDATE	2
VITALITY AND DISTRESS OVERALL RANKINGS	2
METROPOLITAN, MICROPOLITAN, AND RURAL COUNTIES	4
KANSAS IN-STATE BUSINESS/ECONOMIC DEVELOPMENT REGIONS	6
METHODOLOGY	7
VARIABLES	7
FORMULA AND DEFINITIONS	8
VITALITY AND DISTRESS EXAMPLE CALCULATION	9
WEALTH CATEGORY	10
GROWTH CATEGORY	12
DEPENDENT POPULATION CATEGORY	14
EAST CENTRAL REGION	16
NORTH CENTRAL REGION	17
NORTHEAST REGION	18
NORTHWEST REGION	19
SOUTH CENTRAL REGION	20
SOUTHEAST REGION	21
SOUTHWEST REGION	22
APPENDIX 1. HISTORICAL RANKINGS, 2004-2006	23
APPENDIX 2A. COUNTY SIZE, REGION, AND TOTAL SCORE – BY COUNTY NAME	24
APPENDIX 2B. COUNTY SIZE, REGION, AND TOTAL SCORE – BY RANK	25
APPENDIX 2C. COUNTY SIZE, REGION, AND TOTAL SCORE – BY COUNTY SIZE	26
APPENDIX 2D. COUNTY SIZE, REGION, AND TOTAL SCORE – BY REGION	27
APPENDIX 3. WEALTH CATEGORY STATISTICS	28
APPENDIX 4. GROWTH CATEGORY STATISTICS	30
APPENDIX 5. DEPENDENT POPULATION CATEGORY STATISTICS	32
KANSAS, INC. BOARD OF DIRECTORS	34

Paid for with taxes or public funds

INTRODUCTION

This is the eighteenth year Kansas, Inc. has released the County Economic Vitality and Distress Report, a report designed to look at the relative economic performance of Kansas' 105 counties. Within this report, eight social and economic variables are grouped into three categories: wealth, growth, and dependent population. These variables are then analyzed and ranked on a county, regional, and population group basis to better understand each county's economic condition and strength relative to other counties within Kansas.

Historically, Kansas, Inc. has presented two cautionary notes for this report:

- This document seeks to assist communities and policymakers in their efforts for economic and social development. It has never been presented as a tool to identify “good” or “bad,” but merely as a guide to promote dialogue for the benefit of the State.
- This report details changes and placement using eight separate variables. While discussing gains, losses, or place holding in ranking is informative, comparisons within a closed universe (105 counties) can result in misconceptions. For example, a county may have growth in key variables, but go down in overall ranking relative to other counties that may be growing faster. The key value to this report with regard to history is to identify counties experiencing consistent distress or demonstrating a pronounced tendency to fall in the rankings.

KEY POINTS FROM THE 2006 REPORT UPDATE

- The top ten economic vibrant counties included: 1-Johnson, 2-Pottawatomie, 3-Chase, 4-Coffey, 5-Miami, 6-McPherson, 7-Gray, 8-Douglas, and tied at 9-Hamilton and Haskell.¹ Within the top ten counties, three were Metropolitan, three were Micropolitan, and four were Rural. Of these counties, three are located in the East Central Region, three in the Southwest Region, two in the North Central Region, and one each in the Southeast Region and South Central Region.
- Comparing 2006 to 2005, counties making major overall positive moves in the rankings (20 or more spots) included: Gove, Rawlins, Barber, Pawnee, Stanton, Ford, Graham, and Lane Counties.
- At the opposite end of the rankings were 96-Decatur, 97-Russell, 98-Cloud, 99-Neosho, 100-Chautauqua, 101-Woodson, 102-Rush, 103-Sherman, 104-Republic, and 105-Elk.² All of these counties are Rural. Of these counties, three are located in the Northwest Region, two in the North Central Region, two in the Southeast Region, two in the South Central Region, and one in the Southwest Region.
- Comparing 2006 to 2005, counties making major overall negative moves in the rankings (20 or more spots) included: Ness, Marion, Atchison, Jewell, Scott, Chautauqua, Kearny and Mitchell Counties.

VITALITY AND DISTRESS OVERALL RANKINGS

Counties are grouped by overall score and rank according to the results of the Vitality and Distress formula. The following table and map illustrate the rankings according to quintiles. Quintiles are utilized because dividing the 105 Kansas counties by five results in five quintiles of 21 counties, unless there are identical scores between counties. **Based on the formula, a higher ranking indicates greater vitality and a lower ranking indicates greater distress.**

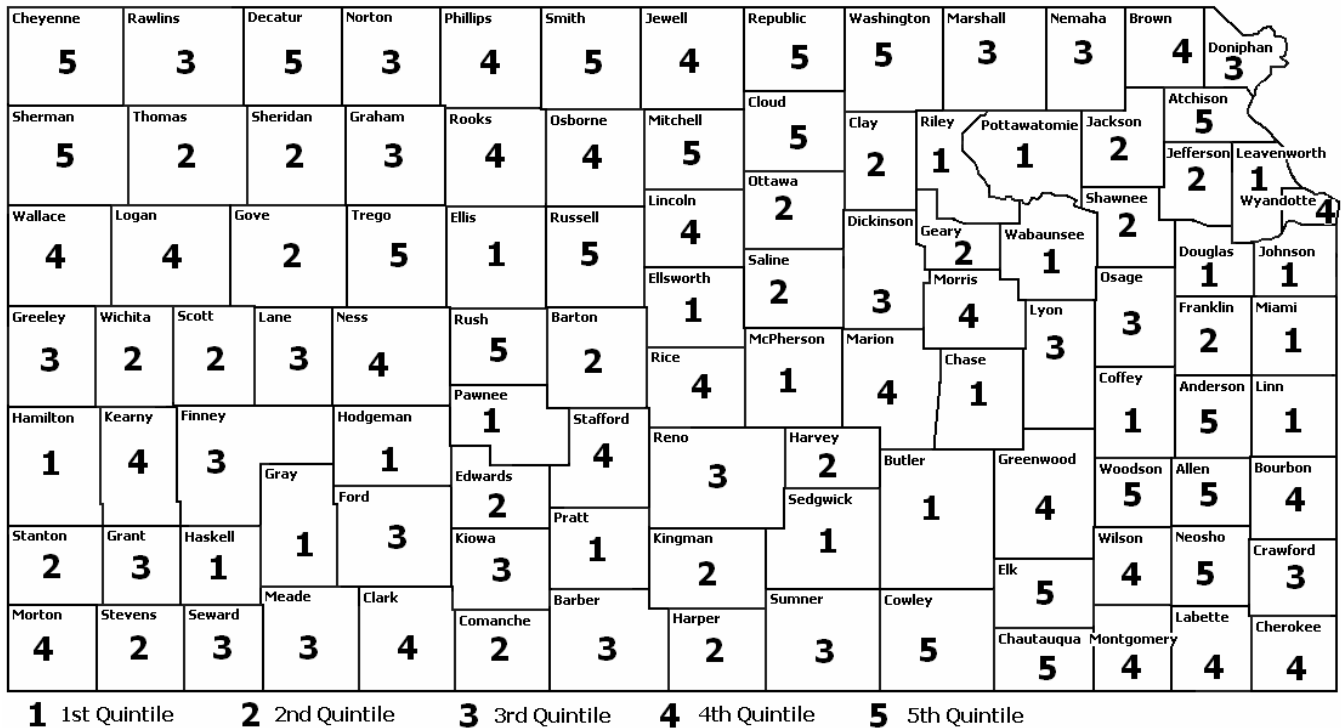
¹ Overall rankings rely on percentage changes in certain variables, which may overemphasize small numerical changes in less populated counties.

² Ibid.

Table 1. Vitality and Distress Rankings, 2006

	1st Quintile	2nd Quintile	3rd Quintile	4th Quintile	5th Quintile
1	Johnson	22 Jefferson	43 Ford	64 Rice	87 Anderson
2	Pottawatomie	22 Saline	44 Nemaha	65 Kearny	88 Cowley
3	Chase	24 Stanton	45 Meade	65 Morton	89 Atchison
4	Coffey	25 Jackson	46 Barber	67 Wilson	90 Smith
5	Miami	26 Harvey	47 Graham	68 Rooks	91 Allen
6	McPherson	26 Ottawa	47 Grant	69 Brown	92 Cheyenne
7	Gray	26 Shawnee	49 Dickinson	70 Clark	92 Trego
8	Douglas	29 Edwards	50 Lyon	71 Labette	94 Washington
9	Hamilton	29 Sheridan	51 Doniphan	72 Ness	95 Mitchell
9	Haskell	31 Kingman	51 Marshall	73 Morris	96 Decatur
11	Pratt	32 Stevens	53 Seward	74 Bourbon	97 Russell
12	Riley	33 Franklin	54 Crawford	75 Phillips	98 Cloud
13	Wabaunsee	34 Clay	54 Greeley	76 Wallace	99 Neosho
14	Ellsworth	35 Harper	54 Lane	77 Marion	100 Chautauqua
15	Hodgeman	36 Scott	54 Reno	77 Wyandotte	101 Woodson
15	Pawnee	37 Comanche	58 Kiowa	79 Greenwood	102 Rush
17	Butler	38 Barton	59 Norton	80 Logan	103 Sherman
17	Sedgwick	39 Geary	59 Rawlins	81 Montgomery	104 Republic
19	Ellis	39 Gove	61 Finney	82 Osborne	105 Elk
20	Leavenworth	41 Thomas	62 Osage	83 Cherokee	
21	Linn	41 Wichita	63 Sumner	84 Jewell	
				84 Lincoln	
				84 Stafford	

Figure 1. Vitality and Distress Rankings, 2006



This report provides the average scores and ranks for different county designations throughout Kansas defined by the Federal government as Metropolitan, Micropolitan, and Rural. A further explanation of these definitions can be found on page four and five. This report also provides average scores and rankings based on the seven regions defined by the Kansas Department of Commerce. A further explanation of these regions can be found on page six. **Vitality and Distress rankings are based upon scores ranging from a minimum of 10 to a maximum of 50, with higher rankings indicating greater vitality and lower rankings indicating greater distress.**

Table 2. Average Score and Rank, by Size and Region, 2006

County Designation	Counties	Average Score	Average Rank
Metropolitan	17	24.9055	29
Micropolitan	19	27.5094	43
Rural	69	31.9410	61
East Central	6	22.1726	24
North Central	19	29.0695	50
Northeast	8	29.8438	49
Northwest	18	33.4028	69
South Central	14	30.6250	54
Southeast	12	33.0060	69
Southwest	28	28.5651	44

METROPOLITAN, MICROPOLITAN, AND RURAL COUNTIES³

The United States Office of Management and Budget (OMB) defined Metropolitan and Micropolitan statistical areas according to published standards that are applied to Census Bureau data. The general concept of a Metropolitan or Micropolitan Statistical Area is that of a core area containing a substantial population nucleus, together with adjacent communities having a high degree of economic and social integration with that core. Currently defined Metropolitan and Micropolitan statistical areas are based on application of the 2000 standards.

Core Based Statistical Areas (CBSA) are defined as a statistical geographic entity consisting of the county or counties associated with at least one core (urbanized area or urban cluster) of at least 10,000 population, plus adjacent counties having a high degree of social and economic integration with the core as measured through commuting ties with the counties containing the core. Metropolitan and Micropolitan Statistical Areas are the two categories of Core Based Statistical Areas.

Metropolitan Statistical Area – A Core Based Statistical Area associated with at least one urbanized area that has a population of at least 50,000. The Metropolitan Statistical Area comprises the central county or counties containing the core, plus adjacent outlying counties having a high degree of social and economic integration with the central county as measured through commuting.

Micropolitan Statistical Area – A Core Based Statistical Area associated with at least one urbanized cluster that has a population of at least 10,000, but less than 50,000. The Micropolitan Statistical Area comprises the central county or counties containing the core, plus adjacent outlying counties having a high degree of social and economic integration with the central county as measured through commuting.

Rural counties are counties that are not designated as Metropolitan and Micropolitan.

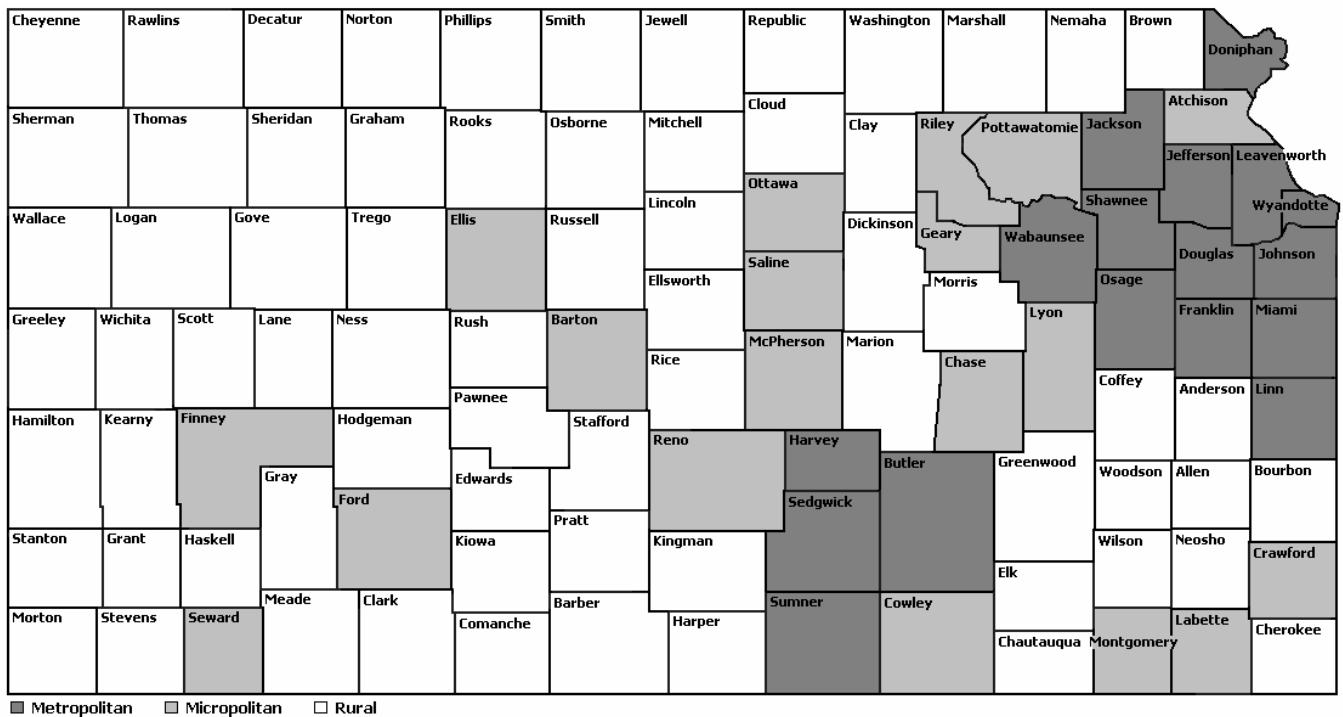
The purpose of the Standards for Defining Metropolitan and Micropolitan Statistical Areas is to provide nationally consistent definitions for collecting, tabulating, and publishing Federal statistics for a set of

³ Federal Register, United States Office of Management and Budget (OMB), December 27, 2000.

geographical areas. However, OMB cautions that Metropolitan Statistical Area and Micropolitan Statistical Area Definitions should not be used to develop and implement Federal, state, and local non-statistical programs and policies without full consideration of the effects of using these definitions for such purposes.

Metropolitan and Micropolitan Statistical Areas should not serve as a general purpose geographic framework for non-statistical activities and may or may not be suitable for use in program funding formulas. The Metropolitan and Micropolitan Statistical Area Standards do not equate to an urban-rural classification; all counties included in Metropolitan and Micropolitan Statistical Areas and many other counties contain both urban and rural territory and populations. Programs that base funding levels or eligibility on whether a county is included in a Metropolitan or Micropolitan Statistical Area may not accurately address issues or problems faced by local populations, organizations, institutions, or governmental units. OMB urges agencies, organizations, and policy makers to review carefully the goals of non-statistical programs and policies to ensure that appropriate geographic entities are used to determine eligibility for and the allocation of Federal funds.

Figure 2. Metropolitan, Micropolitan, and Rural Counties



KANSAS IN-STATE BUSINESS/ECONOMIC DEVELOPMENT REGIONS⁴

As the State's lead economic agency, the Kansas Department of Commerce has a clear mission:

*“To empower individuals, businesses, and communities
to realize prosperity in Kansas.”*

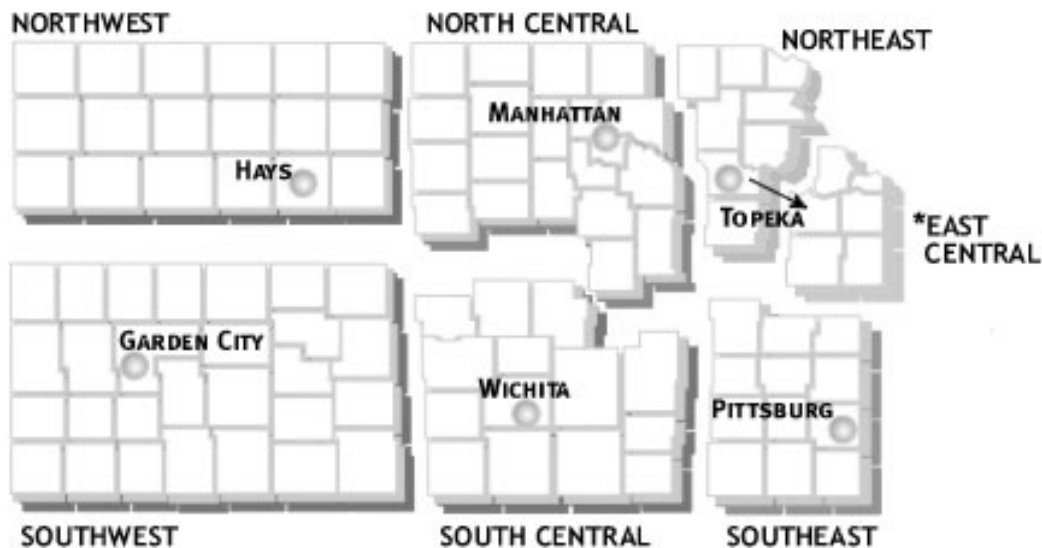
To this end, Commerce comprises a variety of programs and services that create jobs, attract new investment, provide workforce training, encourage community development, and sell the state as a wonderful place to travel, live, and do business.

Commerce delivers its programs through the following divisions: Agriculture Marketing, Business Development, Community Development, Trade Development, Travel & Tourism, and Workforce Development. While the existence of separate divisions allows staff members to become specialists in their fields, collaboration between the entities allows Commerce to best administer its programs and serve its customers.

The efforts of the professionals staffing Kansas' seven regional field offices bring the Kansas Department of Commerce programs and activities to communities and business throughout the state. The field staff works with both communities and private businesses acting as a conduit to identify and provide assistance that benefits and promotes the growth of all Kansas regions.

Offices are located in and serve the regions surrounding the following cities: Garden City, Wichita, Hays, Pittsburg, Topeka, and Manhattan.

Figure 3. Kansas In-State Business/Economic Development Regions



⁴ Kansas Department of Commerce.

METHODOLOGY

The *County Economic Vitality and Distress Report* is designed to look at the relative economic performance of Kansas' 105 counties. Within this report, eight social and economic variables are grouped into three areas: wealth, growth, and dependent population. These variables are then analyzed and ranked on a county, regional, and population group basis to understand each county's economic condition and strength relative to other counties within Kansas.

Vitality and Distress rankings are based on scores, ranging from a minimum of 10 to a maximum of 50, with higher rankings indicating greater vitality and lower rankings indicating greater distress. When discussing gains, losses, or place holding in ranking is informative, comparison within a closed universe (105 counties) can result in misconceptions. For example, a county may have growth in key variables, but go down in overall ranking relative to other counties that may be growing faster.

Composite rankings were calculated using a weighted formula based on eight variables assigned into three separate categories. The combined effect of the individual variables presents a broad, objective, and comparative analysis of a single county's recent economic health. Local economies are multidimensional and factors such as population change, area demand for public assistance, and age distribution help present a better understanding of a county's economic health, rather than looking only at employment and income data.

VARIABLES

Wealth Category

- Per Capita Income – 2005
Source: U.S. Bureau of Economic Analysis
- Per Capita Property Valuation – 2006
Source: League of Kansas Municipalities, 2007 Annual Tax Rate and Fiscal Data Book
- Temporary Assistance to Families and General Assistance – Fiscal Year 2006
Source: Kansas Department of Social and Rehabilitative Services

Growth Category

- Net Population Change – 1996 to 2006
Source: U.S. Census Bureau
- Employment Change – 1996 to 2006 (Long-Term) and 2004 to 2006 (Short-Term)
Source: U.S. Department of Labor, Bureau of Labor Statistics

Dependent Population Category

- Population Share of Individuals 65 Years of Age and Older – 2006
Source: U.S. Census Bureau
- Population Share of Individuals Between 20 and 64 Years of Age – 2006
Source: U.S. Census Bureau

FORMULA AND DEFINITIONS

The following formula is utilized for determining a county's score and overall ranking within the *County Economic Vitality and Distress Report*.

Vitality and Distress Overall Score =

$$[(\text{Wealth} * 0.45) + (\text{Growth} * 0.35) + (\text{Dependent Population} * 0.20)] * (50/14)$$

For each variable category, counties are ranked overall and assigned a quintile based upon that ranking. The scores overall and within each category are determined by using quintiles, which are based upon a county's rank compared to other counties within Kansas. Specifically, if a county's rank is: 1-21, then first quintile; 22-42, then second quintile; 43-63, then third quintile; 64-84, then fourth quintile; and 85-105, then fifth quintile.

Once county rankings are complete for each variable and the individual counties are assigned a quintile based upon that ranking, category scores are then calculated. Specifically, within each category (Wealth, Growth, and Dependent Population), the quintiles for each variable are summed and the total is multiplied by a predetermined weight based upon an assumption of the particular category's contribution to an area's economic vitality. The weights are 0.45 for Wealth, 0.35 for Growth, and 0.20 for Dependent Population.

The scores for each category are then summed and multiplied by a factor (50/14) to make a final adjustment to normalize the scores, which results in a range of total scores from a minimum of 10 to a maximum of 50. Overall rankings are then determined from these scores.

Wealth Category =

**Per Capita Personal Income Quintile + Per Capita Property Valuation Quintile +
Percent of Population receiving Temporary Assistance to Families and General Assistance Quintile**

Growth Category =

**1996 to 2006 Net Population Change Quintile + 1996 to 2006 Long-Run Employment Change Quintile +
2004 to 2006 Short-Run Employment Change Quintile**

Dependent Population Category =

**Population Share of Individuals 65 and Older Quintile + Population Share of Individuals between 20
and 64 Quintile**

Data is collected within each category for all counties in Kansas, and rankings and quintiles are calculated based upon this data to determine a score from the vitality and distress formula. Overall rankings for each county are then determined based on the vitality and distress formula.

VITALITY AND DISTRESS EXAMPLE CALCULATION

The following example illustrates the methodology used in the Vitality and Distress Report.

Wealth: Scott County had a 2005 Per Capita Personal Income of \$30,742, ranking it (24th) compared to other Kansas counties and placing it in the second quintile. Scott County had a 2006 Per Capita Property Valuation of \$15,683, ranking it (24th) compared to other Kansas counties and placing it in the second quintile. During 2006, Scott County had 0.93 percent of its population receiving Temporary Assistance to Families and General Assistance, ranking it (46th) compared to other Kansas counties and placing it in the third quintile.

Scott County's score within the Wealth Category is determined by summing the individual quintiles and multiplying that sum by a predetermined factor of 0.45. $(2+2+3)*0.45 = 3.15$

This score ranks Scott County (27th) in the Wealth Category compared to other counties.

Growth: Scott County had an estimated population of 4,643 on July 1, 2006, resulting in a -10.42 percent decrease in population compared to 1996. This rank was (75th) compared to other Kansas counties, placing it in the fourth quintile. Scott County had a long-run employment change of 3.14 percent from 1996 to 2006, ranking it (40th) compared to other Kansas counties and placing it in the second quintile. Scott County had a short-run employment change of -4.56 percent from 2004 to 2006, ranking it (88th) compared to other Kansas counties and placing it in the fifth quintile.

Scott County's score within the Growth Category is determined by summing the individual quintiles and multiplying that sum by a predetermined factor of 0.35. $(4+2+5)*0.35 = 3.85$

This score ranks Scott County (67th) in the Growth Category compared to other counties.

Dependent Population: Scott County had an estimated 2,644 citizens of age 20 to 64 during 2006, resulting in 56.95 percent of the population considered working age. This rank was (33rd) compared to other Kansas counties, placing it in the second quintile. Scott County had an estimated 747 citizens of age 65 and older during 2006, resulting in 16.09 percent of the population considered elderly. This rank was (38th) compared to other Kansas counties, placing it in the second quintile.

Scott County's score within the Dependent Population Category is determined by summing the individual quintiles and multiplying that sum by a predetermined factor of 0.20. $(2+2)*0.20 = 0.80$

This score ranks Scott County (21st) in the Dependent Population Category compared to other counties.

Vitality and Distress Total Score: After each category has been calculated, a final adjustment is made to the combined scores resulting in a range of total scores from a minimum of 10 to a maximum of 50. **A lower score indicates greater vitality and a higher score indicates greater distress.** The results are then grouped into a final ranking of counties, into five quintiles – the least distressed counties are grouped into the first quintile, and so forth.

Scott County's total score would be $(3.15+3.85+0.80)*(50/14) = 27.8571$

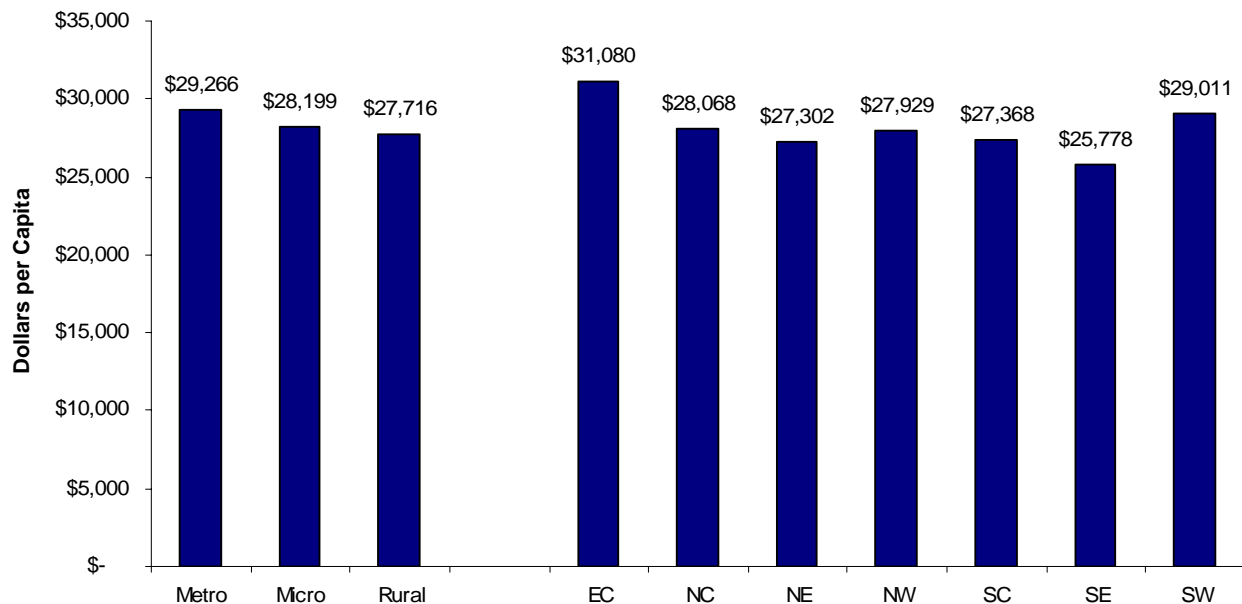
This score ranks Scott County (36th) compared to other Kansas counties, placing it in the second quintile overall for the 2006 report update.

WEALTH CATEGORY

The Wealth Category includes three variables. The variables are per capita personal income, per capita property valuation, and the population share receiving either Temporary Assistance to Families (TAF) or General Assistance (GA).

Per Capita Personal Income: Per capita personal income is the income received by persons from all sources, divided by the population. During 2005, the average per capita personal income in Kansas was \$32,866⁵. Per capita personal income ranged from \$21,954 (Lincoln) to \$48,123 (Johnson). The following counties had above average per capita personal income levels: Lane (\$33,116), Coffey (\$33,134), Chase (\$33,696), Graham (\$34,272), Sheridan (\$34,465), Sedgwick (\$34,703), Geary (\$34,784), Wichita (\$35,014), Ness (\$35,449), and Haskell (\$35,924). Johnson and Sedgwick are Metropolitan counties in the East Central and South Central Regions, respectively, Chase and Geary are Micropolitan counties in the North Central Region, Lane, Wichita, Ness, and Haskell are Rural counties located in the Southwest Region, Graham and Sheridan are Rural counties located in the Northwest Region, and Coffey is a Rural county located in the Southeast Region.

Figure 4. Per Capita Personal Income, 2005



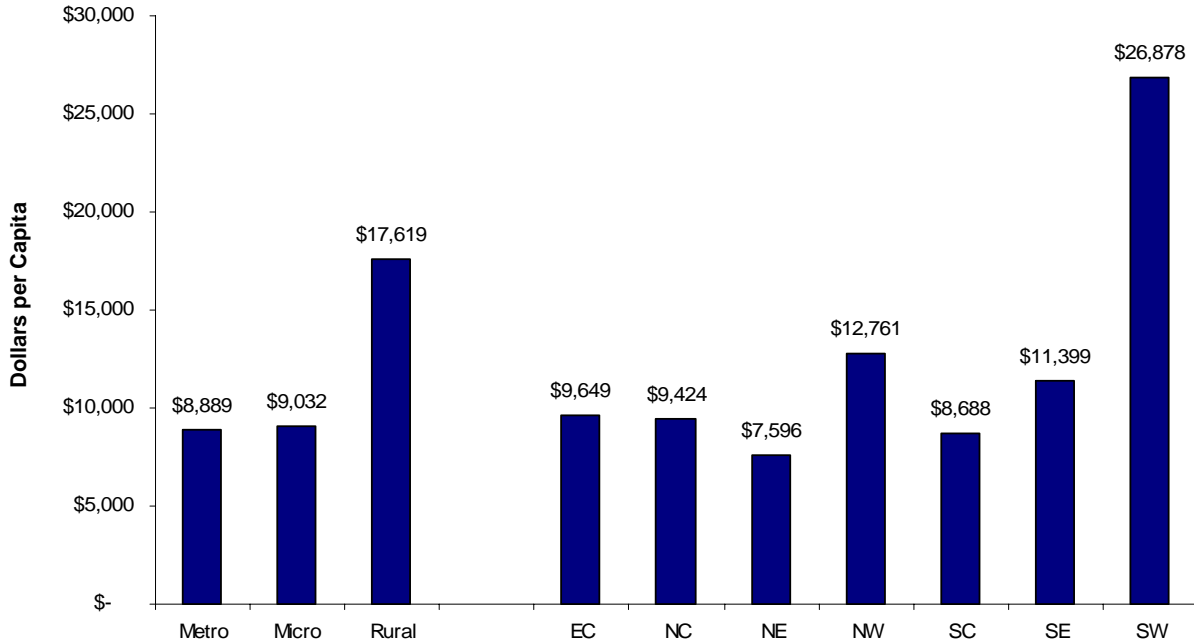
Per Capita Property Valuation: Per capita property valuation is a measure of fixed investments or assets that exist within a county, divided by the population. To allow for comparison, this variable is normalized using county population. During 2006, the average per capita property valuation in Kansas was \$10,461. Per capita property valuation ranged from \$5,366 (Labette) to \$75,829 (Stevens).

Less-populated counties can benefit from a sizable natural resource base, such as the oil and gas rich Southwest Region, or counties can benefit from the presence of a large power plant or industrial facility. As a group, Rural counties perform better in this category, in part because of the high value of undeveloped land combined with small populations. As evidence, nine of the top ten counties in per capita property valuation are Rural counties located in the Southwest Kansas Region.

Large industrial facilities, such as Wolf Creek Nuclear Power Plant located in Coffey County and Jeffrey Energy Center located in Pottawatomie County also contribute to the high rankings in this category. The presence of public structures, such as Fort Riley in Geary County and Kansas State University in Riley County may cause these counties to rank lower than would normally be expected, however, it should be noted that substantial economic benefits result from the presence of these facilities.

⁵ Table SA1-3 State Annual Personal Income, Regional Economic Information System, Bureau of Economic Analysis, March 2007. (All state and county dollar estimates are in current dollars – not adjusted for inflation)

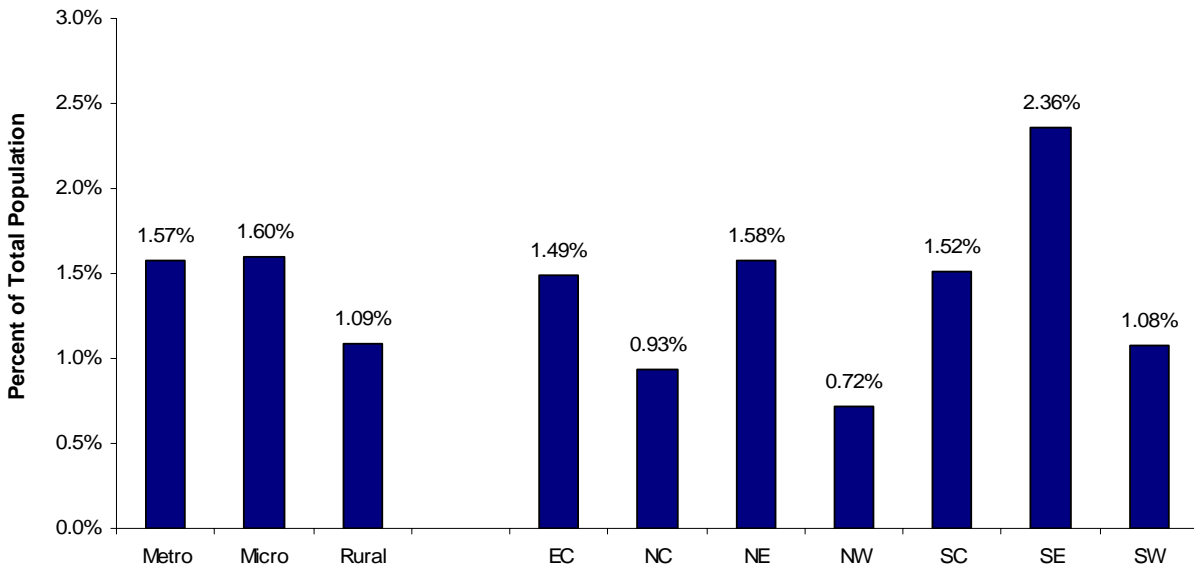
Figure 5. Per Capita Property Valuation, 2006



Welfare Program Participation: The measure of a county’s population base that receives public support, either through Temporary Assistance for Families or General Assistance, seeks to identify counties with a disproportionate amount of poverty. This variable attempts to assess the relative differences between counties and is not intended to be a definitive analysis of poverty levels. For this variable, a higher rank is given to a county with a lower percentage of its population receiving assistance. During 2006, 1.78 percent of Kansans received assistance from either of these programs. This figure ranged from 0.27 percent (Sheridan) to 4.07 percent (Wyandotte).

Eight of the top ten counties with the lowest percentage of welfare program participation were Rural counties, with Johnson (0.43 percent) being the only Metropolitan county and Pottawatomie (0.55 percent) being the only Micropolitan county.

Figure 6. Welfare Program Participation, 2006

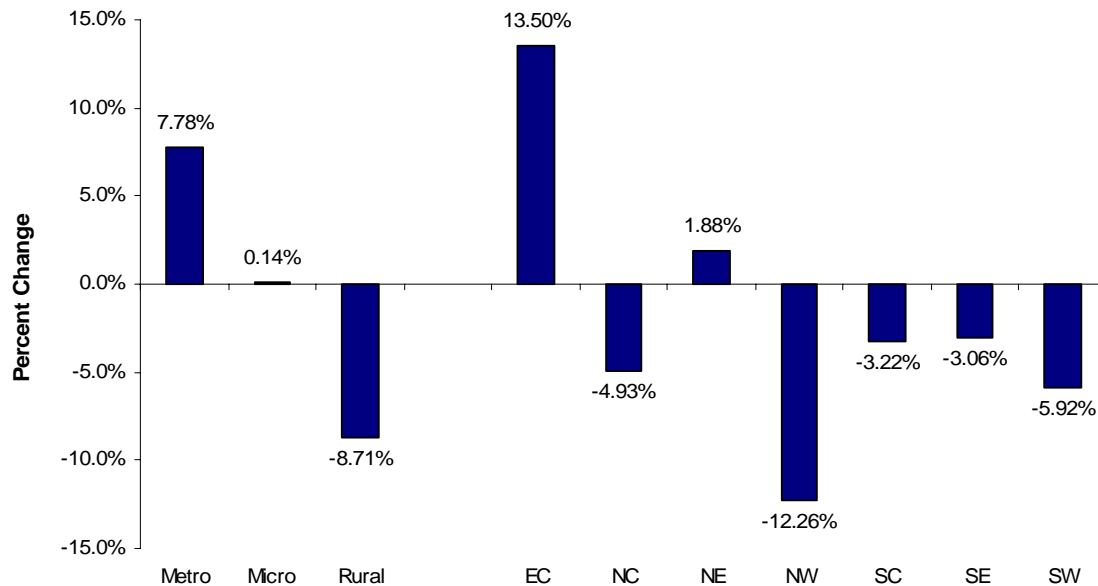


GROWTH CATEGORY

The Growth Category includes three variables intended to demonstrate the long-term viability of a community's economy. Population change illustrates the growth or decline in population from 1996 to 2006, while long-run and short-run employment change shows the growth or decline in employment levels from 1996 to 2006 and 2004 to 2006, respectively. Employment data represents residents who are employed, and does not necessarily indicate jobs created in a county.

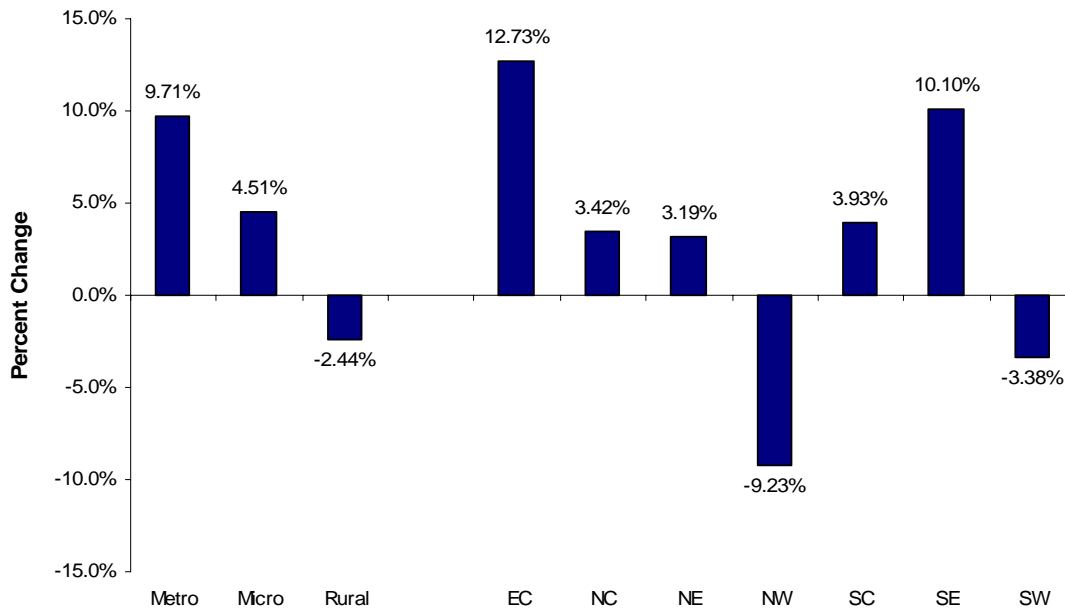
Population: The U.S. Census Bureau estimated the 2006 Kansas population at 2.76 million, a 5.72 percent increase over 1996. During this period, 75 counties lost population, and of these counties 33 lost more than 10 percent of their population. Of the 30 counties that gained population, 9 counties gained more than 10 percent. Population growth ranged from -19.05 percent, or -423 (Lane) to 25.53 percent, or 105,096 (Johnson) during this period. Seven of the top ten counties in population growth during this period were Metropolitan, while the remaining three were Micropolitan counties. During this period, Metropolitan counties have seen an increase in population, while many Rural counties has experienced a decrease in population. Many counties located in the western part of the state have experienced a decrease in population, while counties located in the East Central Region have experienced an increase in population.

Figure 7. Population Change, 1996 to 2006



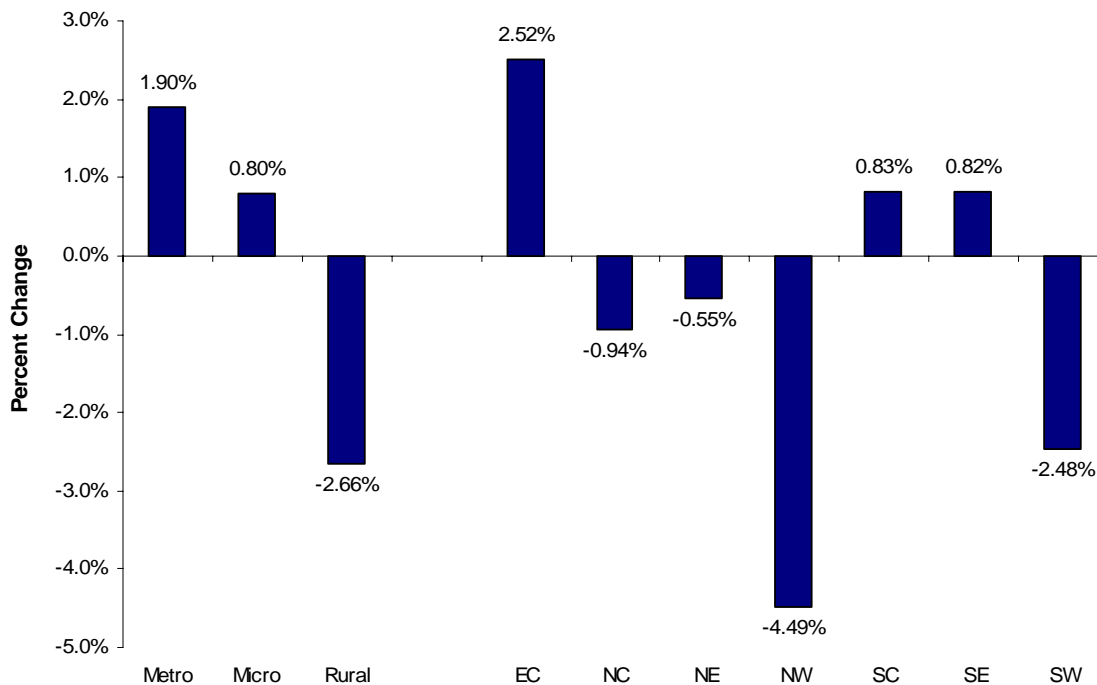
Long-Run Employment: From 1996 to 2006, long-run employment grew 6.73 percent in Kansas. During this period, 53 counties had positive long-run employment growth, and of this group 26 counties exceeded the state average. Long-run employment growth ranged from -28.47 percent (Sherman) to 48.10 percent (Linn) during this period. Five of the top ten counties in long-run employment growth during this period were Metropolitan, two were Micropolitan, and three were Rural counties. During this period, primarily Metropolitan counties in the East Central Region experienced an increase in employment, while many of the Rural counties in western Kansas experienced a decrease in employment.

Figure 8. Long-Run Employment Change, 1996 to 2006



Short-Run Employment: From 2004 to 2006, short-run employment grew 1.56 percent in Kansas. During this period, 37 counties had positive short-run employment growth, and of this group 23 counties exceeded the state average. Short-run employment growth ranged from -19.71 percent (Sherman) to 9.20 percent (Ellsworth) during this period. Four of the top ten counties in short-run employment growth during this period were Metropolitan, two were Micropolitan, and four were Rural counties. During this period, primarily Metropolitan counties experienced an increase in employment, while Rural counties overall experienced a decrease in employment.

Figure 9. Short-Run Employment Change, 2004 to 2006

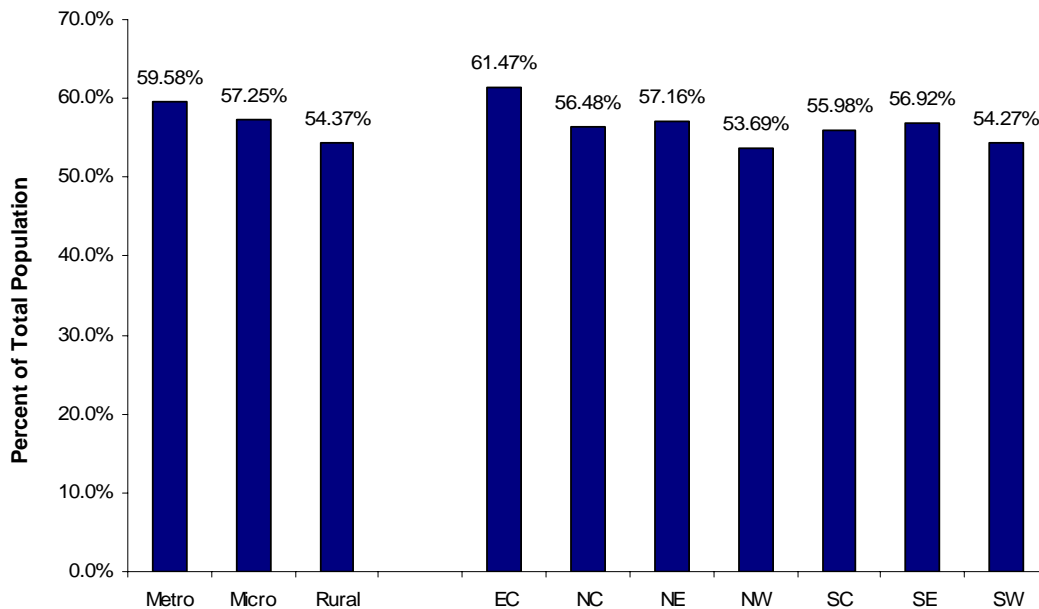


DEPENDENT POPULATION CATEGORY

The Dependent Population Category includes two variables that measure the overall labor force and demand for services in a community. These variables are percent of population between the ages of 20 and 64 (i.e. working age) and percent of population aged 65 and over (i.e. elderly). The percent of population below age 20 is not included as it is implied by the inclusion of these two variables.

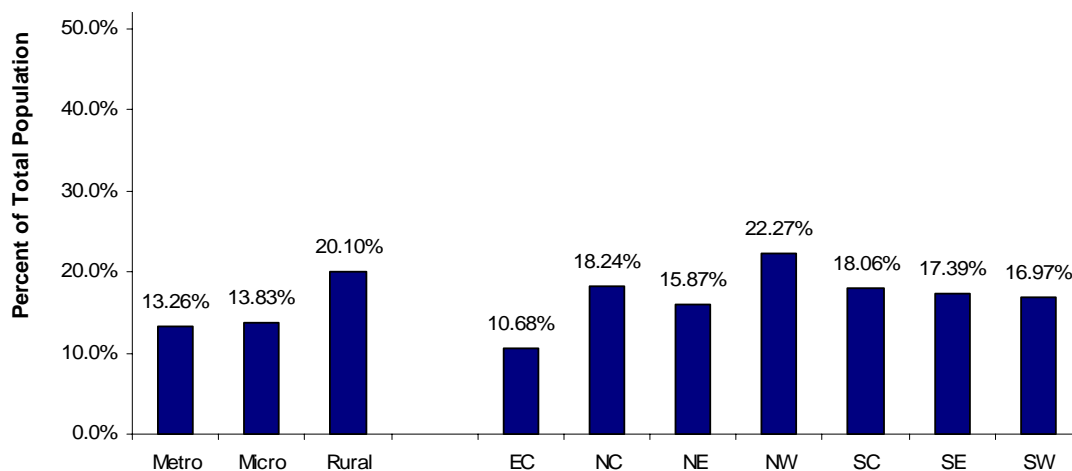
Working Age Population (20 to 64): During 2006, 58.96 percent of Kansan's were considered working age. 16 counties had a higher proportion of working age adults compared to the state average, while all 105 counties had a proportion of working adults of 50 percent or more. The proportion of working age adults ranged from 50.20 percent (Gove) to 65.78 percent (Douglas). Six of the top ten counties in proportion of working age adults were Metropolitan, two were Micropolitan, and two were Rural counties.

Figure 10. Percent of Population Age 20 to 64, 2006



Elderly Population (65+): During 2006, 12.94 percent of Kansan's were 65 and older. 18 counties had a lower proportion of elderly population compared to the state average. The proportion of elderly population ranged from 7.54 percent (Finney) to 28.03 percent (Smith). Four of the top ten counties in proportion of elderly population were Metropolitan, four were Micropolitan, and two were Rural counties.

Figure 11. Percent of Population Age 65 and Over, 2006

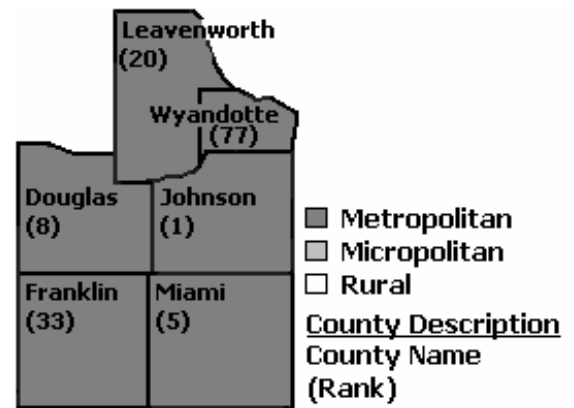


This page is intentionally left blank

EAST CENTRAL REGION

Regional Characteristics: The East Central Region consists of six counties, all of which are Metropolitan in or near the Kansas City Metropolitan Area. Four counties share a border with Missouri. The population ranges from 26,513 (Franklin) to 516,731 (Johnson). Johnson is the most populated county in Kansas, and this region is the most populated in Kansas.

There are several public educational institutions located throughout this region, including: University of Kansas (Douglas), University of Kansas Edwards Campus (Johnson), Johnson County Community College/Area Vocational School, Kansas City Kansas Area Technical School (Wyandotte), Kansas City Kansas Community College (Wyandotte), and University of Kansas Medical Center (Wyandotte). Fort Leavenworth is also located within this region. Interstate's 35, 70, 435 and 635 traverse this region.



County Specific: Johnson was the most economically vibrant county in Kansas during 2006. Within this region, the average overall rank was 24th during 2006, compared to 19th during 2005.

Further analysis depicts three counties in this region ranked in the top ten overall. The highest ranking county was Johnson (1st) and the lowest ranking county was Wyandotte (77th). Within the Wealth Category, only Johnson ranked in the top ten, while Johnson, Leavenworth, and Miami ranked in the top ten in the Growth Category, and all counties in this region, excluding Wyandotte, ranked (1st) in the Dependent Population Category. Overall rankings are provided in the following table and further summarized in the appendices.

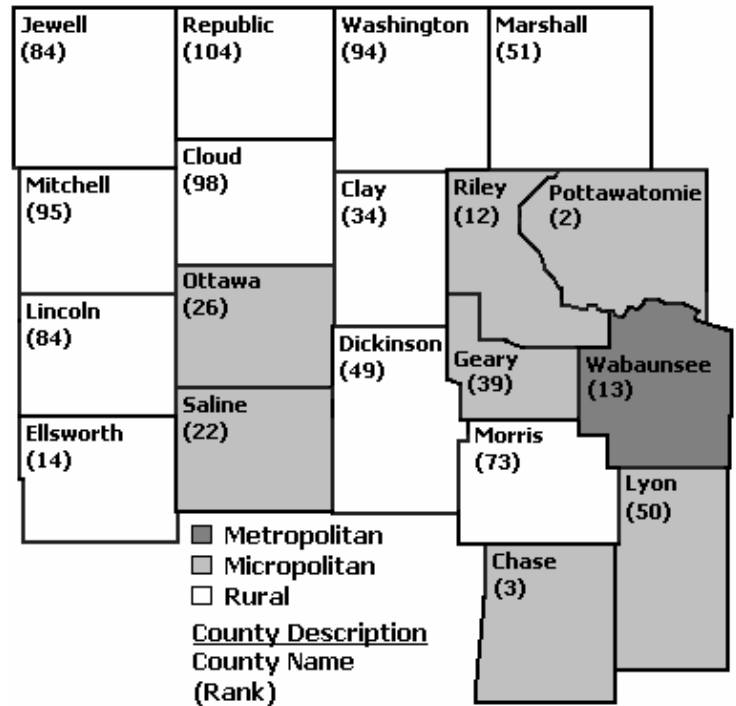
Table 3. East Central Region Vitality and Distress Rankings, 2006

County	July 1, 2006 Population	Overall Rank	Wealth Rank	Growth Rank	Dep. Pop. Rank
Douglas	112,123	8	40	15	1
Franklin	26,513	33	78	15	1
Johnson	516,731	1	2	1	1
Leavenworth	73,628	20	69	1	1
Miami	30,900	5	27	1	1
Wyandotte	155,509	77	95	39	11
Total	915,404				
Average	152,567	24	52	12	3

NORTH CENTRAL REGION

Regional Characteristics: The North Central Region consists of 19 counties, including one Metropolitan, seven Micropolitan, and 11 Rural counties. Four counties share a border with Nebraska. The population ranges from 3,070 (Chase) to 62,527 (Riley).

There are several public educational institutions located throughout this region, including: Cloud County Community College, Emporia State University (Lyon), Flint Hills Technical College (Lyon), North Central Kansas Technical College (Mitchell), Kansas State University (Riley), Manhattan Area Technical College (Riley), KSU at Salina College of Technology and Aviation (Saline), and Salina Area Technical School (Saline). Fort Riley is also located within this region. Jeffrey Energy Center is located within Pottawatomie County. Interstate's 70 and 135 traverse this region.



County Specific: Within this region, the average overall rank was 50th during 2006, compared to 43rd during 2005.

Further analysis depicts two counties in this region ranked in the top ten overall. The highest ranking county was Pottawatomie (2nd) and the lowest ranking county was Republic (104th). Within the Wealth Category, Chase and Pottawatomie ranked in the top ten, while Chase, Ellsworth, Ottawa, and Pottawatomie ranked in the top ten in the Growth Category, and Lyon and Riley ranked (1st) in the Dependent Population Category. Overall rankings are provided in the following table and further summarized in the appendices.

Table 4. North Central Region Vitality and Distress Rankings, 2006

County	July 1, 2006 Population	Overall Rank	Wealth Rank	Growth Rank	Dep. Pop. Rank
Chase	3,070	3	2	6	37
Clay	8,625	34	50	26	52
Cloud	9,594	98	78	67	81
Dickinson	19,322	49	60	39	37
Ellsworth	6,332	14	50	6	21
Geary	24,174	39	50	52	21
Jewell	3,324	84	40	83	81
Lincoln	3,396	84	78	52	61
Lyon	35,369	50	87	20	1
Marshall	10,349	51	27	67	61
Mitchell	6,299	95	50	94	81
Morris	6,046	73	40	83	61
Ottawa	6,168	26	69	6	37
Pottawatomie	19,220	2	2	1	11
Republic	5,033	104	60	94	94
Riley	62,527	12	40	20	1
Saline	54,170	22	50	26	11
Wabaunsee	6,895	13	27	26	11
Washington	5,944	94	50	83	94
Total	295,857				
Average	15,571	50	48	45	45

NORTHEAST REGION

Regional Characteristics: The Northeast Region consists of eight counties, including five Metropolitan, one Micropolitan, and two Rural counties. Three counties share a border with Nebraska and two counties share a border with Missouri. The population ranges from 7,865 (Doniphan) to 172,693 (Shawnee).

There are several public educational institutions located throughout this region, including: Northeast Kansas Technical College (Atchison), Highland Community College (Doniphan), Washburn University (Shawnee), and Kaw Area Technical School (Shawnee). Interstate's 35, 70, and 335 traverse this region.

County Specific: Within this region, the average overall rank was 49th during 2006, compared to 43rd during 2005.

Further analysis depicts no counties in this region ranked in the top ten overall. The highest ranking county was Jefferson (22nd) and the lowest ranking county was Atchison (89th). Within the Wealth and Growth Categories, no counties ranked within the top ten, while only Shawnee ranked (1st) within the Dependent Population Category. Overall rankings are provided in the following table and further summarized in the appendices.

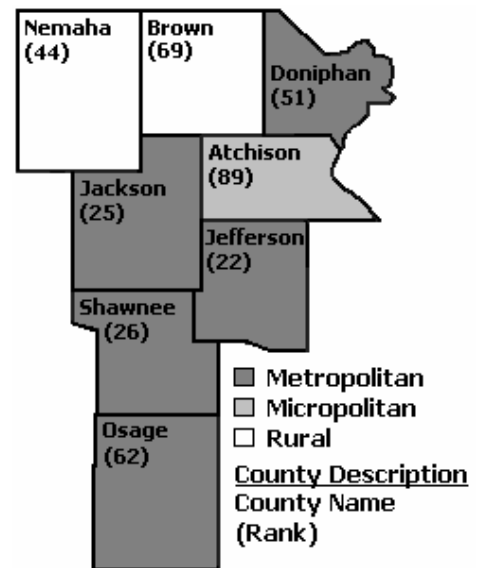


Table 5. Northeast Region Vitality and Distress Rankings, 2006

County	July 1, 2006 Population	Overall Rank	Wealth Rank	Growth Rank	Dep. Pop. Rank
Atchison	16,745	89	105	26	37
Brown	10,236	69	78	39	52
Doniphan	7,865	51	87	15	21
Jackson	13,500	25	69	15	11
Jefferson	18,848	22	50	26	11
Nemaha	10,374	44	27	52	81
Osage	16,958	62	95	20	11
Shawnee	172,693	26	60	26	1
Total	267,219				
Average	33,402	49	71	27	28

NORTHWEST REGION

Regional Characteristics: The Northwest Region consists of 18 counties, including one Micropolitan and 17 Rural counties. Six counties share a border with Nebraska and three counties share a border with Colorado. The population ranges from 1,557 (Wallace) to 26,926 (Ellis).

There are several public educational institutions located through this region, including: Fort Hays State University (Ellis), Northwest Kansas Technical College (Sherman), and Colby Community College (Thomas). Interstate 70 traverses this region.

Cheyenne (92)	Rawlins (59)	Decatur (96)	Norton (59)	Phillips (75)	Smith (90)
Sherman (103)	Thomas (41)	Sheridan (29)	Graham (47)	Rooks (68)	Osborne (82)
Wallace (76)	Logan (80)	Gove (39)	Trego (92)	Ellis (19)	Russell (97)

Metropolitan County Description
 Micropolitan County Name
 Rural (Rank)

County Specific: Within this region, the average overall rank was 69th during 2006, compared to 75th during 2005.

Further analysis depicts no counties in this region ranked in the top ten overall. The highest ranking county was Ellis (19th) and the lowest ranking county was Sherman (103rd). Within the Wealth Category, Ellis, Gove, Graham, Rawlins, and Sheridan ranked in the top ten, while no counties ranked in the top ten in the Growth and Dependent Population Categories. Overall rankings are provided in the following table and further summarized in the appendices.

Table 6. Northwest Region Vitality and Distress Rankings, 2006

County	July 1, 2006 Population	Overall Rank	Wealth Rank	Growth Rank	Dep. Pop. Rank
Cheyenne	2,911	92	40	94	94
Decatur	3,120	96	40	101	94
Ellis	26,926	19	10	60	11
Gove	2,721	39	2	79	94
Graham	2,677	47	1	94	94
Logan	2,675	80	40	83	71
Norton	5,584	59	60	60	21
Osborne	3,978	82	50	67	94
Phillips	5,444	75	27	94	71
Rawlins	2,643	59	10	83	94
Rooks	5,290	68	27	83	71
Russell	6,740	97	60	83	81
Sheridan	2,600	29	2	67	81
Sherman	5,981	103	60	101	71
Smith	4,024	90	27	101	94
Thomas	7,468	41	27	67	37
Trego	2,993	92	60	79	81
Wallace	1,557	76	50	79	61
Total	95,332				
Average	5,296	69	33	82	73

SOUTH CENTRAL REGION

Regional Characteristics: The South Central Region consists of 14 counties, including four Metropolitan, three Micropolitan, and seven Rural counties. Four counties share a border with Oklahoma. The population ranges from 3,077 (Elk) to 470,895 (Sedgwick).

There are several public educational institutions located throughout this region, including: Butler Community College, Cowley County Community College/Area Vocational-Technical School, Hutchinson Community College/Area Technical School (Reno), Wichita State University (Sedgwick), and Wichita Area Technical College (Sedgwick). McConnell Air Force Base is also located within this region. Interstate's 35 and 135 traverse this region.

County Specific: Within this region, the average overall rank was 54th during 2006, compared to 52nd during 2005.

Further analysis depicts one county in this region ranking in the top ten overall. The highest ranking county was McPherson (6th) and the lowest ranking county was Elk (105th). Within the Wealth Category, no counties ranked in the top ten, while Butler, Harvey, McPherson, and Sedgwick ranked in the top ten in the Growth Category, and Butler and Sedgwick ranked (1st) in the Dependent Population Category. Overall rankings are provided in the following table and further summarized in the appendices.

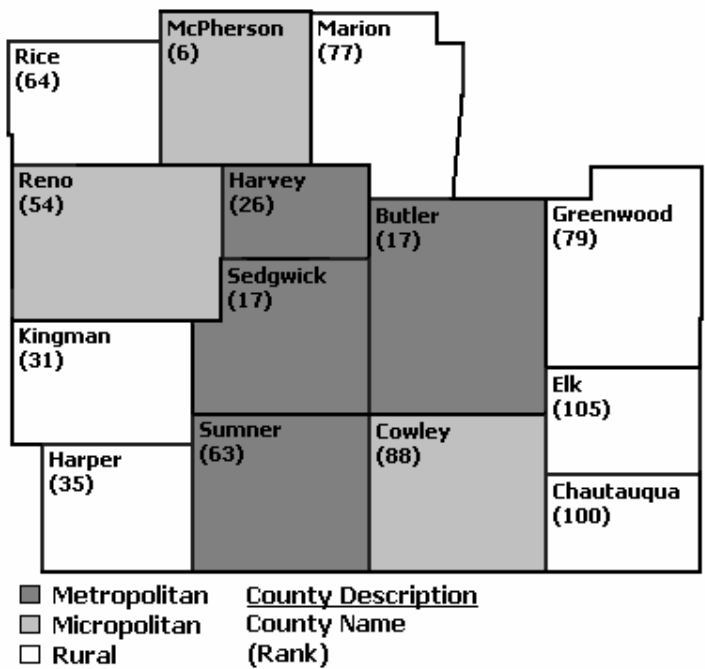


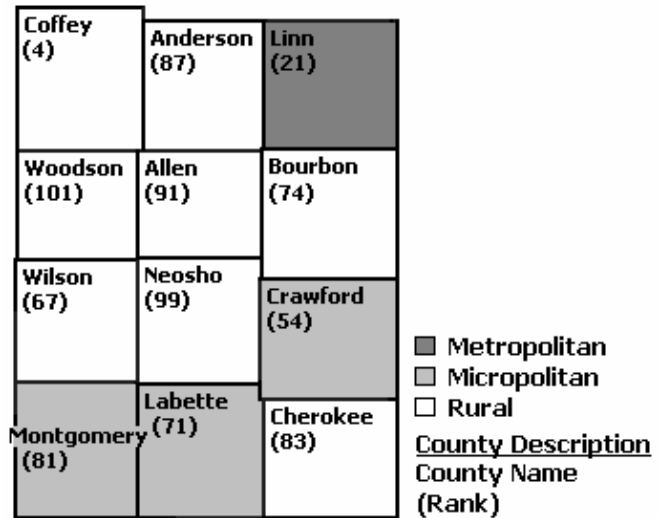
Table 7. South Central Region Vitality and Distress Rankings, 2006

County	July 1, 2006 Population	Overall Rank	Wealth Rank	Growth Rank	Dep. Pop. Rank
Butler	63,147	17	60	6	1
Chautauqua	3,953	100	87	60	81
Cowley	34,931	88	87	60	21
Elk	3,077	105	95	79	81
Greenwood	7,067	79	87	26	61
Harper	5,952	35	27	39	81
Harvey	33,643	26	69	6	37
Kingman	7,975	31	27	39	71
Marion	12,760	77	69	52	71
McPherson	29,380	6	19	6	37
Reno	63,706	54	78	26	21
Rice	10,295	64	78	26	52
Sedgwick	470,895	17	60	6	1
Sumner	24,441	63	78	39	21
Total	771,222				
Average	55,087	54	66	34	46

SOUTHEAST REGION

Regional Characteristics: The Southeast Region consists of 12 counties, including one Metropolitan, three Micropolitan, and eight Rural counties. Four counties share a border with Missouri and three counties share a border with Oklahoma. The population ranges from 3,507 (Woodson) to 38,059 (Crawford).

There are several public education institutions located throughout this region, including: Allen County Community College, Fort Scott Community College (Bourbon), Pittsburg State University (Crawford), Labette Community College, Coffeyville Community College/Area Technical School (Montgomery), Independence Community College (Montgomery), Southeast Kansas Area Vocational School (Montgomery), and Neosho County Community College. Wolf Creek Nuclear Power Plant is located within Coffey County.



County Specific: Within this region, the average overall rank was 69th during 2006, compared to 71st during 2005.

Further analysis depicts one county in this region ranking in the top ten overall. The highest ranking county was Coffey (4th) and the lowest ranking county was Woodson (101st). Within the Wealth Category only Coffey ranked in the top ten, while Coffey and Linn ranked in the top ten in the Growth Category, and no counties in the region ranked in the top ten in the Dependent Population Category. Overall rankings are provided in the following table and further summarized in the appendices.

Table 8. Southeast Region Vitality and Distress Rankings, 2006

County	July 1, 2006 Population	Overall Rank	Wealth Rank	Growth Rank	Dep. Pop. Rank
Allen	13,677	91	95	52	37
Anderson	8,051	87	95	26	61
Bourbon	14,950	74	95	20	52
Cherokee	21,451	83	95	39	21
Coffey	8,701	4	10	6	11
Crawford	38,059	54	95	15	11
Labette	22,203	71	87	39	21
Linn	9,962	21	69	1	37
Montgomery	34,692	81	87	39	52
Neosho	16,298	99	95	67	37
Wilson	9,889	67	78	26	61
Woodson	3,507	101	95	60	61
Total	201,440				
Average	16,787	69	83	33	39

SOUTHWEST REGION

Regional Characteristics: The Southwest Region consists of 28 counties, including four Micropolitan and 24 Rural counties. Seven counties share a border with Oklahoma and four counties share a border with Colorado. The population ranges from 1,331 (Greeley) to 39,097 (Finney).

There are several public educational institutions located throughout this region, including: Barton County Community College, Dodge City Community College/Area Technical Center (Ford), Garden City Community College (Finney), Pratt Community College, Seward County Community College, and Southwest Kansas Technical School (Seward). The Southwest Region benefits from an attractive oil and gas natural resource base.

County Specific: Within this region, the average overall rank was 44th during 2006, compared to 48th during 2005.

Further analysis depicts three counties in this region ranked in the top ten overall. The highest ranking county was Gray (7th) and the lowest ranking county was Rush (102nd). Within the Wealth Category, Gray, Greeley, Hamilton, Hodgeman, Kiowa, Ness, Pratt, Stanton, and Wichita ranked in the top ten, while only Ford ranked in the top ten in the Growth Category, and no counties in the region ranked in the top ten in the Dependent Population Category. Overall rankings are provided in the following table and further summarized in the appendices.

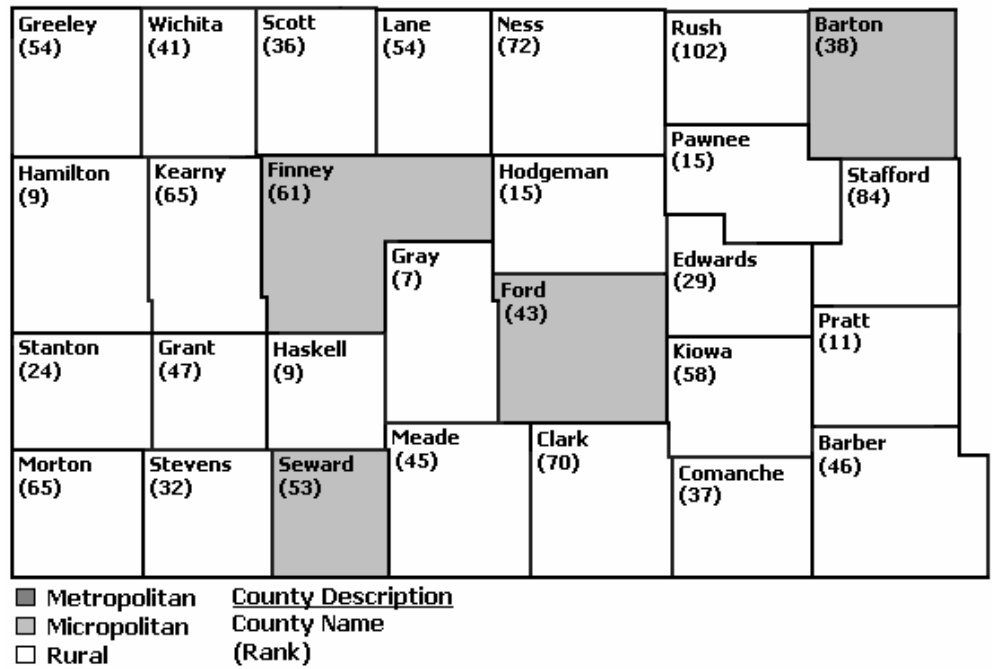


Table 9. Southwest Region Vitality and Distress Rankings, 2006

County	July 1, 2006 Population	Overall Rank	Wealth Rank	Growth Rank	Dep. Pop. Rank
Barber	4,974	46	27	67	52
Barton	27,511	38	40	52	52
Clark	2,206	70	19	94	81
Comanche	1,884	37	27	39	94
Edwards	3,138	29	19	52	71
Finney	39,097	61	78	26	37
Ford	33,783	43	87	6	21
Grant	7,552	47	40	67	21
Gray	5,852	7	10	20	21
Greeley	1,331	54	2	101	71
Hamilton	2,594	9	10	20	71
Haskell	4,171	9	19	26	21
Hodgeman	2,071	15	2	60	37
Kearny	4,469	65	69	52	37
Kiowa	2,969	58	2	94	94
Lane	1,797	54	19	83	61
Meade	4,561	45	19	67	71
Morton	3,138	65	50	67	52
Ness	2,946	72	10	101	94
Pawnee	6,515	15	19	39	21
Pratt	9,436	11	10	39	37
Rush	3,317	102	69	83	81
Scott	4,643	36	27	67	21
Seward	23,404	53	69	39	21
Stafford	4,435	84	40	83	81
Stanton	2,232	24	10	60	61
Stevens	5,287	32	19	67	37
Wichita	2,288	41	10	83	52
Total	217,601				
Average	7,771	44	29	59	53

APPENDIX 1. HISTORICAL RANKINGS, 2004-2006

Area	2006	2005	2004
Allen	91	81	80
Anderson	87	103	86
Atchison	89	67	70
Barber	46	74	47
Barton	38	57	96
Bourbon	74	82	53
Brown	69	62	48
Butler	17	13	17
Chase	3	3	7
Chautauqua	100	73	87
Cherokee	83	65	60
Cheyenne	92	79	55
Clark	70	86	53
Clay	34	27	57
Cloud	98	86	79
Coffey	4	4	2
Comanche	37	41	75
Cowley	88	95	101
Crawford	54	51	68
Decatur	96	101	88
Dickinson	49	30	34
Doniphan	51	38	37
Douglas	8	7	6
Edwards	29	47	78
Elk	105	105	90
Ellis	19	12	15
Ellsworth	14	29	21
Finney	61	59	69
Ford	43	67	52
Franklin	33	22	27
Geary	39	39	63
Gove	39	84	75
Graham	47	67	51
Grant	47	34	31
Gray	7	5	4
Greeley	54	62	29
Greenwood	79	89	103
Hamilton	9	20	10
Harper	35	43	46
Harvey	26	15	36
Haskell	9	18	9
Hodgeman	15	24	39
Jackson	25	36	34
Jefferson	22	31	22
Jewell	84	61	25
Johnson	1	1	1
Kearny	65	36	48
Kingman	31	31	32
Kiowa	58	60	33
Labette	71	80	102
Lane	54	74	72
Leavenworth	20	14	12

Area	2006	2005	2004
Lincoln	84	83	80
Linn	21	15	20
Logan	80	99	80
Lyon	50	55	63
McPherson	6	8	7
Marion	77	56	75
Marshall	51	45	59
Meade	45	40	14
Miami	5	6	5
Mitchell	95	52	39
Montgomery	81	97	98
Morris	73	71	74
Morton	65	74	63
Nemaha	44	35	48
Neosho	99	92	80
Ness	72	52	38
Norton	59	47	66
Osage	62	44	39
Osborne	82	101	91
Ottawa	26	9	13
Pawnee	15	41	61
Phillips	75	70	67
Pottawatomie	2	2	3
Pratt	11	23	28
Rawlins	59	93	58
Reno	54	66	72
Republic	104	93	100
Rice	64	49	70
Riley	12	21	55
Rooks	68	78	89
Rush	102	95	91
Russell	97	91	91
Saline	22	17	24
Scott	36	11	19
Sedgwick	17	19	22
Seward	53	46	39
Shawnee	26	31	44
Sheridan	29	27	18
Sherman	103	100	61
Smith	90	90	97
Stafford	84	85	80
Stanton	24	50	39
Stevens	32	25	25
Sumner	63	71	91
Thomas	41	52	29
Trego	92	98	104
Wabaunsee	13	10	11
Wallace	76	58	45
Washington	94	86	99
Wichita	41	25	16
Wilson	67	77	91
Woodson	101	103	105
Wyandotte	77	62	85

APPENDIX 2A. COUNTY SIZE, REGION, AND TOTAL SCORE – BY COUNTY NAME

Area	Size	Region	Score	Rank
Allen	Rural	SE	37.3214	91
Anderson	Rural	SE	36.2500	87
Atchison	Micro	NE	36.4286	89
Barber	Rural	SW	29.2857	46
Barton	Micro	SW	28.3929	38
Bourbon	Rural	SE	34.2857	74
Brown	Rural	NE	33.5714	69
Butler	Metro	SC	22.5000	17
Chase	Micro	NC	15.0000	3
Chautauqua	Rural	SC	39.8214	100
Cherokee	Rural	SE	35.3571	83
Cheyenne	Rural	NW	37.5000	92
Clark	Rural	SW	33.5714	70
Clay	Rural	NC	27.5000	34
Cloud	Rural	NC	39.4643	98
Coffey	Rural	SE	15.1786	4
Comanche	Rural	SW	28.3929	37
Cowley	Micro	SC	36.2500	88
Crawford	Micro	SE	30.8929	54
Decatur	Rural	NW	38.7500	96
Dickinson	Rural	NC	29.6429	49
Doniphan	Metro	NE	30.0000	51
Douglas	Metro	EC	20.5357	8
Edwards	Rural	SW	26.6071	29
Elk	Rural	SC	43.9286	105
Ellis	Micro	NW	22.6786	19
Ellsworth	Rural	NC	22.3214	14
Finney	Micro	SW	31.6071	61
Ford	Micro	SW	28.7500	43
Franklin	Metro	EC	26.9643	33
Geary	Micro	NC	28.5714	39
Gove	Rural	NW	28.5714	39
Graham	Rural	NW	29.4643	47
Grant	Rural	SW	29.4643	47
Gray	Rural	SW	18.3929	7
Greeley	Rural	SW	30.8929	54
Greenwood	Rural	SC	34.6429	79
Hamilton	Rural	SW	21.2500	9
Harper	Rural	SC	27.6786	35
Harvey	Metro	SC	26.2500	26
Haskell	Rural	SW	21.2500	9
Hodgeman	Rural	SW	22.5000	15
Jackson	Metro	NE	26.0714	25
Jefferson	Metro	NE	25.3571	22
Jewell	Rural	NC	35.5357	84
Johnson	Metro	EC	11.6071	1
Kearny	Rural	SW	32.5000	65
Kingman	Rural	SC	26.9643	31
Kiowa	Rural	SW	31.0714	58
Labette	Micro	SE	33.7500	71
Lane	Rural	SW	30.8929	54
Leavenworth	Metro	EC	22.8571	20

Area	Size	Region	Score	Rank
Lincoln	Rural	NC	35.5357	84
Linn	Metro	SE	25.0000	21
Logan	Rural	NW	34.8214	80
Lyon	Micro	NC	29.8214	50
McPherson	Micro	SC	18.2143	6
Marion	Rural	SC	34.6429	77
Marshall	Rural	NC	30.0000	51
Meade	Rural	SW	29.1071	45
Miami	Metro	EC	16.4286	5
Mitchell	Rural	NC	38.3929	95
Montgomery	Micro	SE	35.1786	81
Morris	Rural	NC	34.1071	73
Morton	Rural	SW	32.5000	65
Nemaha	Rural	NE	28.9286	44
Neosho	Rural	SE	39.8214	99
Ness	Rural	SW	33.9286	72
Norton	Rural	NW	31.4286	59
Osage	Metro	NE	32.1429	62
Osborne	Rural	NW	35.3571	82
Ottawa	Micro	NC	26.2500	26
Pawnee	Rural	SW	22.5000	15
Phillips	Rural	NW	34.4643	75
Pottawatomie	Micro	NC	12.3214	2
Pratt	Rural	SW	21.6071	11
Rawlins	Rural	NW	31.4286	59
Reno	Micro	SC	30.8929	54
Republic	Rural	NC	40.7143	104
Rice	Rural	SC	32.3214	64
Riley	Micro	NC	21.7857	12
Rooks	Rural	NW	33.2143	68
Rush	Rural	SW	40.3571	102
Russell	Rural	NW	38.7500	97
Saline	Micro	NC	25.3571	22
Scott	Rural	SW	27.8571	36
Sedgwick	Metro	SC	22.5000	17
Seward	Micro	SW	30.5357	53
Shawnee	Metro	NE	26.2500	26
Sheridan	Rural	NW	26.6071	29
Sherman	Rural	NW	40.5357	103
Smith	Rural	NW	37.1429	90
Stafford	Rural	SW	35.5357	84
Stanton	Rural	SW	25.5357	24
Stevens	Rural	SW	26.9643	32
Sumner	Metro	SC	32.1429	63
Thomas	Rural	NW	28.5714	41
Trego	Rural	NW	37.5000	92
Wabaunsee	Metro	NC	22.1429	13
Wallace	Rural	NW	34.4643	76
Washington	Rural	NC	37.8571	94
Wichita	Rural	SW	28.5714	41
Wilson	Rural	SE	33.0357	67
Woodson	Rural	SE	40.0000	101
Wyandotte	Metro	EC	34.6429	77

APPENDIX 2B. COUNTY SIZE, REGION, AND TOTAL SCORE – BY RANK

Area	Size	Region	Score	Rank
Johnson	Metro	EC	11.6071	1
Pottawatomie	Micro	NC	12.3214	2
Chase	Micro	NC	15.0000	3
Coffey	Rural	SE	15.1786	4
Miami	Metro	EC	16.4286	5
McPherson	Micro	SC	18.2143	6
Gray	Rural	SW	18.3929	7
Douglas	Metro	EC	20.5357	8
Hamilton	Rural	SW	21.2500	9
Haskell	Rural	SW	21.2500	9
Pratt	Rural	SW	21.6071	11
Riley	Micro	NC	21.7857	12
Waubunsee	Metro	NC	22.1429	13
Ellsworth	Rural	NC	22.3214	14
Hodgeman	Rural	SW	22.5000	15
Pawnee	Rural	SW	22.5000	15
Butler	Metro	SC	22.5000	17
Sedgwick	Metro	SC	22.5000	17
Ellis	Micro	NW	22.6786	19
Leavenworth	Metro	EC	22.8571	20
Linn	Metro	SE	25.0000	21
Jefferson	Metro	NE	25.3571	22
Saline	Micro	NC	25.3571	22
Stanton	Rural	SW	25.5357	24
Jackson	Metro	NE	26.0714	25
Harvey	Metro	SC	26.2500	26
Ottawa	Micro	NC	26.2500	26
Shawnee	Metro	NE	26.2500	26
Edwards	Rural	SW	26.6071	29
Sheridan	Rural	NW	26.6071	29
Kingman	Rural	SC	26.9643	31
Stevens	Rural	SW	26.9643	32
Franklin	Metro	EC	26.9643	33
Clay	Rural	NC	27.5000	34
Harper	Rural	SC	27.6786	35
Scott	Rural	SW	27.8571	36
Comanche	Rural	SW	28.3929	37
Barton	Micro	SW	28.3929	38
Geary	Micro	NC	28.5714	39
Gove	Rural	NW	28.5714	39
Thomas	Rural	NW	28.5714	41
Wichita	Rural	SW	28.5714	41
Ford	Micro	SW	28.7500	43
Nemaha	Rural	NE	28.9286	44
Meade	Rural	SW	29.1071	45
Barber	Rural	SW	29.2857	46
Graham	Rural	NW	29.4643	47
Grant	Rural	SW	29.4643	47
Dickinson	Rural	NC	29.6429	49
Lyon	Micro	NC	29.8214	50
Doniphan	Metro	NE	30.0000	51
Marshall	Rural	NC	30.0000	51

Area	Size	Region	Score	Rank
Seward	Micro	SW	30.5357	53
Crawford	Micro	SE	30.8929	54
Greeley	Rural	SW	30.8929	54
Lane	Rural	SW	30.8929	54
Reno	Micro	SC	30.8929	54
Kiowa	Rural	SW	31.0714	58
Norton	Rural	NW	31.4286	59
Rawlins	Rural	NW	31.4286	59
Finney	Micro	SW	31.6071	61
Osage	Metro	NE	32.1429	62
Sumner	Metro	SC	32.1429	63
Rice	Rural	SC	32.3214	64
Kearny	Rural	SW	32.5000	65
Morton	Rural	SW	32.5000	65
Wilson	Rural	SE	33.0357	67
Rooks	Rural	NW	33.2143	68
Brown	Rural	NE	33.5714	69
Clark	Rural	SW	33.5714	70
Labette	Micro	SE	33.7500	71
Ness	Rural	SW	33.9286	72
Morris	Rural	NC	34.1071	73
Bourbon	Rural	SE	34.2857	74
Phillips	Rural	NW	34.4643	75
Wallace	Rural	NW	34.4643	76
Marion	Rural	SC	34.6429	77
Wyandotte	Metro	EC	34.6429	77
Greenwood	Rural	SC	34.6429	79
Logan	Rural	NW	34.8214	80
Montgomery	Micro	SE	35.1786	81
Osborne	Rural	NW	35.3571	82
Cherokee	Rural	SE	35.3571	83
Jewell	Rural	NC	35.5357	84
Lincoln	Rural	NC	35.5357	84
Stafford	Rural	SW	35.5357	84
Anderson	Rural	SE	36.2500	87
Cowley	Micro	SC	36.2500	88
Atchison	Micro	NE	36.4286	89
Smith	Rural	NW	37.1429	90
Allen	Rural	SE	37.3214	91
Cheyenne	Rural	NW	37.5000	92
Trego	Rural	NW	37.5000	92
Washington	Rural	NC	37.8571	94
Mitchell	Rural	NC	38.3929	95
Decatur	Rural	NW	38.7500	96
Russell	Rural	NW	38.7500	97
Cloud	Rural	NC	39.4643	98
Neosho	Rural	SE	39.8214	99
Chautauqua	Rural	SC	39.8214	100
Woodson	Rural	SE	40.0000	101
Rush	Rural	SW	40.3571	102
Sherman	Rural	NW	40.5357	103
Republic	Rural	NC	40.7143	104
Elk	Rural	SC	43.9286	105

APPENDIX 2C. COUNTY SIZE, REGION, AND TOTAL SCORE – BY COUNTY SIZE

Area	Size	Region	Score	Rank
Butler	Metro	SC	22.5000	17
Doniphan	Metro	NE	30.0000	51
Douglas	Metro	EC	20.5357	8
Franklin	Metro	EC	26.9643	33
Harvey	Metro	SC	26.2500	26
Jackson	Metro	NE	26.0714	25
Jefferson	Metro	NE	25.3571	22
Johnson	Metro	EC	11.6071	1
Leavenworth	Metro	EC	22.8571	20
Linn	Metro	SE	25.0000	21
Miami	Metro	EC	16.4286	5
Osage	Metro	NE	32.1429	62
Sedgwick	Metro	SC	22.5000	17
Shawnee	Metro	NE	26.2500	26
Sumner	Metro	SC	32.1429	63
Wabaunsee	Metro	NC	22.1429	13
Wyandotte	Metro	EC	34.6429	77
Atchison	Micro	NE	36.4286	89
Barton	Micro	SW	28.3929	38
Chase	Micro	NC	15.0000	3
Cowley	Micro	SC	36.2500	88
Crawford	Micro	SE	30.8929	54
Ellis	Micro	NW	22.6786	19
Finney	Micro	SW	31.6071	61
Ford	Micro	SW	28.7500	43
Geary	Micro	NC	28.5714	39
Labette	Micro	SE	33.7500	71
Lyon	Micro	NC	29.8214	50
McPherson	Micro	SC	18.2143	6
Montgomery	Micro	SE	35.1786	81
Ottawa	Micro	NC	26.2500	26
Pottawatomie	Micro	NC	12.3214	2
Reno	Micro	SC	30.8929	54
Riley	Micro	NC	21.7857	12
Saline	Micro	NC	25.3571	22
Seward	Micro	SW	30.5357	53
Allen	Rural	SE	37.3214	91
Anderson	Rural	SE	36.2500	87
Barber	Rural	SW	29.2857	46
Bourbon	Rural	SE	34.2857	74
Brown	Rural	NE	33.5714	69
Chautauqua	Rural	SC	39.8214	100
Cherokee	Rural	SE	35.3571	83
Cheyenne	Rural	NW	37.5000	92
Clark	Rural	SW	33.5714	70
Clay	Rural	NC	27.5000	34
Cloud	Rural	NC	39.4643	98
Coffey	Rural	SE	15.1786	4
Comanche	Rural	SW	28.3929	37
Decatur	Rural	NW	38.7500	96
Dickinson	Rural	NC	29.6429	49
Edwards	Rural	SW	26.6071	29

Area	Size	Region	Score	Rank
Elk	Rural	SC	43.9286	105
Ellsworth	Rural	NC	22.3214	14
Gove	Rural	NW	28.5714	39
Graham	Rural	NW	29.4643	47
Grant	Rural	SW	29.4643	47
Gray	Rural	SW	18.3929	7
Greeley	Rural	SW	30.8929	54
Greenwood	Rural	SC	34.6429	79
Hamilton	Rural	SW	21.2500	9
Harper	Rural	SC	27.6786	35
Haskell	Rural	SW	21.2500	9
Hodgeman	Rural	SW	22.5000	15
Jewell	Rural	NC	35.5357	84
Kearny	Rural	SW	32.5000	65
Kingman	Rural	SC	26.9643	31
Kiowa	Rural	SW	31.0714	58
Lane	Rural	SW	30.8929	54
Lincoln	Rural	NC	35.5357	84
Logan	Rural	NW	34.8214	80
Marion	Rural	SC	34.6429	77
Marshall	Rural	NC	30.0000	51
Meade	Rural	SW	29.1071	45
Mitchell	Rural	NC	38.3929	95
Morris	Rural	NC	34.1071	73
Morton	Rural	SW	32.5000	65
Nemaha	Rural	NE	28.9286	44
Neosho	Rural	SE	39.8214	99
Ness	Rural	SW	33.9286	72
Norton	Rural	NW	31.4286	59
Osborne	Rural	NW	35.3571	82
Pawnee	Rural	SW	22.5000	15
Phillips	Rural	NW	34.4643	75
Pratt	Rural	SW	21.6071	11
Rawlins	Rural	NW	31.4286	59
Republic	Rural	NC	40.7143	104
Rice	Rural	SC	32.3214	64
Rooks	Rural	NW	33.2143	68
Rush	Rural	SW	40.3571	102
Russell	Rural	NW	38.7500	97
Scott	Rural	SW	27.8571	36
Sheridan	Rural	NW	26.6071	29
Sherman	Rural	NW	40.5357	103
Smith	Rural	NW	37.1429	90
Stafford	Rural	SW	35.5357	84
Stanton	Rural	SW	25.5357	24
Stevens	Rural	SW	26.9643	32
Thomas	Rural	NW	28.5714	41
Trego	Rural	NW	37.5000	92
Wallace	Rural	NW	34.4643	76
Washington	Rural	NC	37.8571	94
Wichita	Rural	SW	28.5714	41
Wilson	Rural	SE	33.0357	67
Woodson	Rural	SE	40.0000	101

APPENDIX 2D. COUNTY SIZE, REGION, AND TOTAL SCORE – BY REGION

Area	Size	Region	Score	Rank
Douglas	Metro	EC	20.5357	8
Franklin	Metro	EC	26.9643	33
Johnson	Metro	EC	11.6071	1
Leavenworth	Metro	EC	22.8571	20
Miami	Metro	EC	16.4286	5
Wyandotte	Metro	EC	34.6429	77
Chase	Micro	NC	15.0000	3
Clay	Rural	NC	27.5000	34
Cloud	Rural	NC	39.4643	98
Dickinson	Rural	NC	29.6429	49
Ellsworth	Rural	NC	22.3214	14
Geary	Micro	NC	28.5714	39
Jewell	Rural	NC	35.5357	84
Lincoln	Rural	NC	35.5357	84
Lyon	Micro	NC	29.8214	50
Marshall	Rural	NC	30.0000	51
Mitchell	Rural	NC	38.3929	95
Morris	Rural	NC	34.1071	73
Ottawa	Micro	NC	26.2500	26
Pottawatomie	Micro	NC	12.3214	2
Republic	Rural	NC	40.7143	104
Riley	Micro	NC	21.7857	12
Saline	Micro	NC	25.3571	22
Wabaunsee	Metro	NC	22.1429	13
Washington	Rural	NC	37.8571	94
Atchison	Micro	NE	36.4286	89
Brown	Rural	NE	33.5714	69
Doniphan	Metro	NE	30.0000	51
Jackson	Metro	NE	26.0714	25
Jefferson	Metro	NE	25.3571	22
Nemaha	Rural	NE	28.9286	44
Osage	Metro	NE	32.1429	62
Shawnee	Metro	NE	26.2500	26
Cheyenne	Rural	NW	37.5000	92
Decatur	Rural	NW	38.7500	96
Ellis	Micro	NW	22.6786	19
Gove	Rural	NW	28.5714	39
Graham	Rural	NW	29.4643	47
Logan	Rural	NW	34.8214	80
Norton	Rural	NW	31.4286	59
Osborne	Rural	NW	35.3571	82
Phillips	Rural	NW	34.4643	75
Rawlins	Rural	NW	31.4286	59
Rooks	Rural	NW	33.2143	68
Russell	Rural	NW	38.7500	97
Sheridan	Rural	NW	26.6071	29
Sherman	Rural	NW	40.5357	103
Smith	Rural	NW	37.1429	90
Thomas	Rural	NW	28.5714	41
Trego	Rural	NW	37.5000	92
Wallace	Rural	NW	34.4643	76
Butler	Metro	SC	22.5000	17

Area	Size	Region	Score	Rank
Chautauqua	Rural	SC	39.8214	100
Cowley	Micro	SC	36.2500	88
Elk	Rural	SC	43.9286	105
Greenwood	Rural	SC	34.6429	79
Harper	Rural	SC	27.6786	35
Harvey	Metro	SC	26.2500	26
Kingman	Rural	SC	26.9643	31
Marion	Rural	SC	34.6429	77
McPherson	Micro	SC	18.2143	6
Reno	Micro	SC	30.8929	54
Rice	Rural	SC	32.3214	64
Sedgwick	Metro	SC	22.5000	17
Sumner	Metro	SC	32.1429	63
Allen	Rural	SE	37.3214	91
Anderson	Rural	SE	36.2500	87
Bourbon	Rural	SE	34.2857	74
Cherokee	Rural	SE	35.3571	83
Coffey	Rural	SE	15.1786	4
Crawford	Micro	SE	30.8929	54
Labette	Micro	SE	33.7500	71
Linn	Metro	SE	25.0000	21
Montgomery	Micro	SE	35.1786	81
Neosho	Rural	SE	39.8214	99
Wilson	Rural	SE	33.0357	67
Woodson	Rural	SE	40.0000	101
Barber	Rural	SW	29.2857	46
Barton	Micro	SW	28.3929	38
Clark	Rural	SW	33.5714	70
Comanche	Rural	SW	28.3929	37
Edwards	Rural	SW	26.6071	29
Finney	Micro	SW	31.6071	61
Ford	Micro	SW	28.7500	43
Grant	Rural	SW	29.4643	47
Gray	Rural	SW	18.3929	7
Greeley	Rural	SW	30.8929	54
Hamilton	Rural	SW	21.2500	9
Haskell	Rural	SW	21.2500	9
Hodgeman	Rural	SW	22.5000	15
Kearny	Rural	SW	32.5000	65
Kiowa	Rural	SW	31.0714	58
Lane	Rural	SW	30.8929	54
Meade	Rural	SW	29.1071	45
Morton	Rural	SW	32.5000	65
Ness	Rural	SW	33.9286	72
Pawnee	Rural	SW	22.5000	15
Pratt	Rural	SW	21.6071	11
Rush	Rural	SW	40.3571	102
Scott	Rural	SW	27.8571	36
Seward	Micro	SW	30.5357	53
Stafford	Rural	SW	35.5357	84
Stanton	Rural	SW	25.5357	24
Stevens	Rural	SW	26.9643	32
Wichita	Rural	SW	28.5714	41

APPENDIX 3. WEALTH CATEGORY STATISTICS

Area	2005 Per Capita Personal Income		2006 Assessed Tangible Valuation			FY 2006 Welfare Recipients			Wealth Category	
	Value	Rank	Total	Per Capita	Rank	Number	% of pop	Rank	Score	Rank
Allen	\$ 25,279	78	\$ 84,632,201	\$ 6,188	99	449	3.28%	104	6.30	95
Anderson	\$ 23,893	94	\$ 68,962,617	\$ 8,566	65	163	2.02%	90	6.30	95
Atchison	\$ 24,345	90	\$ 118,279,968	\$ 7,064	89	317	1.89%	87	6.75	105
Barber	\$ 26,371	66	\$ 96,807,747	\$ 19,463	16	41	0.82%	40	3.15	27
Barton	\$ 31,460	21	\$ 206,376,190	\$ 7,502	80	337	1.22%	58	3.60	40
Bourbon	\$ 25,001	83	\$ 88,754,941	\$ 5,937	104	381	2.55%	96	6.30	95
Brown	\$ 28,355	48	\$ 84,660,317	\$ 8,271	70	187	1.83%	86	5.40	78
Butler	\$ 30,228	27	\$ 471,677,198	\$ 7,470	82	810	1.28%	65	4.50	60
Chase	\$ 33,696	9	\$ 40,036,642	\$ 13,041	35	20	0.65%	21	1.80	2
Chautauqua	\$ 25,405	75	\$ 26,603,177	\$ 6,730	93	56	1.42%	75	5.85	87
Cherokee	\$ 25,188	80	\$ 131,038,304	\$ 6,109	100	661	3.08%	101	6.30	95
Cheyenne	\$ 22,232	102	\$ 43,460,833	\$ 14,930	28	10	0.34%	4	3.60	40
Clark	\$ 28,531	42	\$ 42,325,384	\$ 19,186	18	19	0.86%	43	2.70	19
Clay	\$ 31,163	22	\$ 66,313,766	\$ 7,689	75	105	1.22%	57	4.05	50
Cloud	\$ 25,117	81	\$ 70,510,266	\$ 7,349	86	122	1.27%	63	5.40	78
Coffey	\$ 33,134	10	\$ 460,576,212	\$ 52,934	6	91	1.05%	54	2.25	10
Comanche	\$ 22,757	99	\$ 50,287,322	\$ 26,692	10	7	0.37%	5	3.15	27
Cowley	\$ 27,097	55	\$ 210,324,808	\$ 6,021	103	758	2.17%	93	5.85	87
Crawford	\$ 25,330	77	\$ 230,630,004	\$ 6,060	101	1,175	3.09%	102	6.30	95
Decatur	\$ 26,259	69	\$ 32,099,109	\$ 10,288	49	20	0.64%	19	3.60	40
Dickinson	\$ 26,432	61	\$ 147,214,319	\$ 7,619	76	192	0.99%	51	4.50	60
Doniphan	\$ 23,211	97	\$ 66,818,440	\$ 8,496	67	123	1.56%	79	5.85	87
Douglas	\$ 28,394	47	\$ 1,094,938,948	\$ 9,766	52	882	0.79%	36	3.60	40
Edwards	\$ 29,036	37	\$ 48,935,134	\$ 15,594	25	27	0.86%	42	2.70	19
Elk	\$ 22,359	101	\$ 22,968,533	\$ 7,465	83	68	2.21%	95	6.30	95
Ellis	\$ 32,436	13	\$ 309,341,516	\$ 11,489	41	211	0.78%	35	2.25	10
Ellsworth	\$ 26,390	64	\$ 57,358,320	\$ 9,058	61	47	0.74%	31	4.05	50
Finney	\$ 22,827	98	\$ 507,337,233	\$ 12,976	36	1,094	2.80%	99	5.40	78
Ford	\$ 24,965	84	\$ 223,347,352	\$ 6,611	95	610	1.81%	84	5.85	87
Franklin	\$ 26,281	68	\$ 199,140,391	\$ 7,511	79	372	1.40%	74	5.40	78
Geary	\$ 34,784	5	\$ 160,503,930	\$ 6,640	94	303	1.25%	60	4.05	50
Gove	\$ 29,833	32	\$ 45,522,630	\$ 16,730	21	8	0.29%	2	1.80	2
Graham	\$ 34,272	8	\$ 55,514,278	\$ 20,737	14	16	0.60%	15	1.35	1
Grant	\$ 28,503	45	\$ 385,759,733	\$ 51,080	7	100	1.32%	67	3.60	40
Gray	\$ 31,917	16	\$ 65,029,548	\$ 11,112	42	41	0.70%	28	2.25	10
Greeley	\$ 28,805	40	\$ 40,719,104	\$ 30,593	8	6	0.45%	8	1.80	2
Greenwood	\$ 24,818	87	\$ 57,888,615	\$ 8,191	71	109	1.54%	78	5.85	87
Hamilton	\$ 31,909	17	\$ 76,974,425	\$ 29,674	9	27	1.04%	53	2.25	10
Harper	\$ 28,962	39	\$ 75,023,131	\$ 12,605	37	63	1.06%	56	3.15	27
Harvey	\$ 29,977	31	\$ 228,050,254	\$ 6,779	91	453	1.35%	69	4.95	69
Haskell	\$ 35,924	2	\$ 250,355,223	\$ 60,023	4	57	1.37%	71	2.70	19
Hodgeman	\$ 30,268	26	\$ 35,147,301	\$ 16,971	20	13	0.63%	18	1.80	2
Jackson	\$ 28,697	41	\$ 81,434,011	\$ 6,032	102	238	1.76%	83	4.95	69
Jefferson	\$ 26,424	62	\$ 139,698,674	\$ 7,412	84	149	0.79%	37	4.05	50
Jewell	\$ 28,254	49	\$ 35,946,783	\$ 10,814	45	26	0.78%	34	3.60	40
Johnson	\$ 48,123	1	\$ 7,728,958,492	\$ 14,957	27	2,207	0.43%	6	1.80	2
Kearny	\$ 22,449	100	\$ 307,367,175	\$ 68,778	2	81	1.81%	85	4.95	69
Kingman	\$ 27,137	53	\$ 122,114,703	\$ 15,312	26	53	0.66%	23	3.15	27
Kiowa	\$ 30,347	25	\$ 77,071,762	\$ 25,959	11	13	0.44%	7	1.80	2
Labette	\$ 26,539	59	\$ 119,132,871	\$ 5,366	105	472	2.13%	92	5.85	87
Lane	\$ 33,116	11	\$ 36,394,138	\$ 20,253	15	23	1.28%	64	2.70	19
Leavenworth	\$ 28,521	44	\$ 531,986,639	\$ 7,225	87	910	1.24%	59	4.95	69

APPENDIX 3. WEALTH CATEGORY STATISTICS

Area	2005 Per Capita Personal Income		2006 Assessed Tangible Valuation			FY 2006 Welfare Recipients			Wealth Category	
	Value	Rank	Total	Per Capita	Rank	Number	% of pop	Rank	Score	Rank
Lincoln	\$ 21,954	105	\$ 35,451,172	\$ 10,439	48	55	1.62%	82	5.40	78
Linn	\$ 24,654	88	\$ 166,469,914	\$ 16,710	22	159	1.60%	80	4.95	69
Logan	\$ 28,523	43	\$ 39,893,805	\$ 14,914	29	28	1.05%	55	3.60	40
Lyon	\$ 24,652	89	\$ 228,223,135	\$ 6,453	96	447	1.26%	62	5.85	87
McPherson	\$ 31,890	18	\$ 307,784,268	\$ 10,476	47	198	0.67%	24	2.70	19
Marion	\$ 23,336	96	\$ 99,619,045	\$ 7,807	74	87	0.68%	27	4.95	69
Marshall	\$ 32,311	14	\$ 87,265,742	\$ 8,432	68	80	0.77%	33	3.15	27
Meade	\$ 27,240	52	\$ 100,374,120	\$ 22,007	13	31	0.68%	26	2.70	19
Miami	\$ 31,522	20	\$ 337,211,506	\$ 10,913	44	315	1.02%	52	3.15	27
Mitchell	\$ 28,402	46	\$ 55,012,959	\$ 8,734	64	51	0.81%	39	4.05	50
Montgomery	\$ 26,445	60	\$ 221,903,957	\$ 6,396	97	984	2.84%	100	5.85	87
Morris	\$ 25,552	74	\$ 57,645,214	\$ 9,534	55	36	0.60%	14	3.60	40
Morton	\$ 26,313	67	\$ 195,166,266	\$ 62,194	3	44	1.40%	73	4.05	50
Nemaha	\$ 29,984	30	\$ 78,474,443	\$ 7,565	77	60	0.58%	12	3.15	27
Neosho	\$ 25,086	82	\$ 101,614,552	\$ 6,235	98	434	2.66%	97	6.30	95
Ness	\$ 35,449	3	\$ 68,454,886	\$ 23,237	12	28	0.95%	47	2.25	10
Norton	\$ 25,554	73	\$ 40,107,260	\$ 7,183	88	26	0.47%	9	4.50	60
Osage	\$ 24,880	86	\$ 124,969,610	\$ 7,369	85	256	1.51%	77	6.30	95
Osborne	\$ 25,371	76	\$ 36,222,658	\$ 9,106	60	28	0.70%	30	4.05	50
Ottawa	\$ 24,217	92	\$ 57,588,889	\$ 9,337	58	57	0.92%	45	4.95	69
Pawnee	\$ 29,027	38	\$ 57,671,424	\$ 8,852	63	38	0.58%	13	2.70	19
Phillips	\$ 30,143	28	\$ 50,871,556	\$ 9,345	57	36	0.66%	22	3.15	27
Pottawatomie	\$ 30,019	29	\$ 370,377,698	\$ 19,270	17	105	0.55%	10	1.80	2
Pratt	\$ 29,552	34	\$ 110,542,469	\$ 11,715	40	61	0.65%	20	2.25	10
Rawlins	\$ 29,437	36	\$ 32,786,533	\$ 12,405	38	9	0.34%	3	2.25	10
Reno	\$ 27,109	54	\$ 477,812,976	\$ 7,500	81	1,386	2.18%	94	5.40	78
Republic	\$ 24,164	93	\$ 48,541,833	\$ 9,645	53	34	0.68%	25	4.50	60
Rice	\$ 22,176	103	\$ 105,610,702	\$ 10,258	50	143	1.39%	72	5.40	78
Riley	\$ 31,820	19	\$ 421,455,690	\$ 6,740	92	440	0.70%	29	3.60	40
Rooks	\$ 26,378	65	\$ 78,697,730	\$ 14,877	30	32	0.60%	16	3.15	27
Rush	\$ 25,951	70	\$ 36,372,674	\$ 10,966	43	44	1.33%	68	4.95	69
Russell	\$ 25,822	71	\$ 80,739,632	\$ 11,979	39	88	1.31%	66	4.50	60
Saline	\$ 30,930	23	\$ 505,045,209	\$ 9,323	59	784	1.45%	76	4.05	50
Scott	\$ 30,742	24	\$ 72,815,790	\$ 15,683	24	43	0.93%	46	3.15	27
Sedgwick	\$ 34,703	6	\$ 3,793,419,298	\$ 8,056	72	15,335	3.26%	103	4.50	60
Seward	\$ 25,224	79	\$ 312,241,381	\$ 13,341	34	470	2.01%	89	4.95	69
Shawnee	\$ 32,521	12	\$ 1,478,677,621	\$ 8,562	66	4,634	2.68%	98	4.50	60
Sheridan	\$ 34,465	7	\$ 35,190,271	\$ 13,535	32	7	0.27%	1	1.80	2
Sherman	\$ 26,402	63	\$ 61,143,670	\$ 10,223	51	96	1.61%	81	4.50	60
Smith	\$ 26,830	57	\$ 36,137,806	\$ 8,981	62	22	0.55%	11	3.15	27
Stafford	\$ 27,097	55	\$ 72,283,949	\$ 16,299	23	43	0.97%	49	3.60	40
Stanton	\$ 31,952	15	\$ 126,052,330	\$ 56,475	5	28	1.25%	61	2.25	10
Stevens	\$ 29,561	33	\$ 400,906,488	\$ 75,829	1	52	0.98%	50	2.70	19
Sumner	\$ 27,949	50	\$ 170,273,783	\$ 6,967	90	331	1.35%	70	5.40	78
Thomas	\$ 29,522	35	\$ 80,743,172	\$ 10,812	46	63	0.84%	41	3.15	27
Trego	\$ 24,280	91	\$ 40,828,444	\$ 13,641	31	29	0.97%	48	4.50	60
Wabaunsee	\$ 27,800	51	\$ 64,588,459	\$ 9,367	56	43	0.62%	17	3.15	27
Wallace	\$ 24,956	85	\$ 28,838,991	\$ 18,522	19	14	0.90%	44	4.05	50
Washington	\$ 25,637	72	\$ 56,915,673	\$ 9,575	54	48	0.81%	38	4.05	50
Wichita	\$ 35,014	4	\$ 30,903,657	\$ 13,507	33	17	0.74%	32	2.25	10
Wilson	\$ 26,622	58	\$ 79,015,042	\$ 7,990	73	208	2.10%	91	5.40	78
Woodson	\$ 22,166	104	\$ 29,112,163	\$ 8,301	69	67	1.91%	88	6.30	95
Wyandotte	\$ 23,640	95	\$ 1,169,496,965	\$ 7,520	78	6,328	4.07%	105	6.30	95

APPENDIX 4. GROWTH CATEGORY STATISTICS

Area	Population				Employment			Long-Run Employment		Short-Run Employment		Growth Category	
	1996	2006	Change	Rank	1996	2004	2006	Change	Rank	Change	Rank	Score	Rank
Allen	14,677	13,677	-6.81%	61	6,503	6,993	6,763	4.00%	36	-3.29%	74	3.15	52
Anderson	7,985	8,051	0.83%	26	3,705	3,903	3,865	4.32%	35	-0.97%	50	2.45	26
Atchison	16,786	16,745	-0.24%	32	7,625	8,220	8,143	6.79%	26	-0.94%	47	2.45	26
Barber	5,511	4,974	-9.74%	72	2,477	2,589	2,533	2.26%	45	-2.16%	65	3.85	67
Barton	28,915	27,511	-4.86%	51	14,843	14,260	14,440	-2.72%	64	1.26%	27	3.15	52
Bourbon	15,380	14,950	-2.80%	40	6,447	8,206	8,165	26.65%	2	-0.50%	43	2.10	20
Brown	10,901	10,236	-6.10%	57	4,653	5,381	5,257	12.98%	12	-2.30%	67	2.80	39
Butler	57,337	63,147	10.13%	9	28,744	29,335	30,617	6.52%	27	4.37%	7	1.40	6
Chase	2,991	3,070	2.64%	20	1,401	1,665	1,686	20.34%	6	1.26%	28	1.40	6
Chautauqua	4,408	3,953	-10.32%	74	1,636	1,935	1,770	8.19%	21	-8.53%	103	3.50	60
Cherokee	22,667	21,451	-5.36%	53	9,687	10,465	10,405	7.41%	24	-0.57%	44	2.80	39
Cheyenne	3,214	2,911	-9.43%	70	1,533	1,566	1,410	-8.02%	85	-9.96%	104	4.90	94
Clark	2,425	2,206	-9.03%	68	1,313	1,195	1,138	-13.33%	96	-4.77%	90	4.90	94
Clay	9,164	8,625	-5.88%	54	4,617	4,601	4,711	2.04%	47	2.39%	18	2.45	26
Cloud	10,505	9,594	-8.67%	66	5,033	5,528	5,272	4.75%	34	-4.63%	89	3.85	67
Coffey	8,808	8,701	-1.21%	36	4,068	4,627	4,851	19.25%	7	4.84%	5	1.40	6
Comanche	2,107	1,884	-10.58%	78	1,040	1,019	1,048	0.77%	51	2.85%	16	2.80	39
Cowley	37,290	34,931	-6.33%	58	17,730	16,906	16,566	-6.57%	79	-2.01%	62	3.50	60
Crawford	37,967	38,059	0.24%	30	17,658	19,203	19,458	10.19%	19	1.33%	26	1.75	15
Decatur	3,619	3,120	-13.79%	91	1,795	1,752	1,628	-9.30%	91	-7.08%	100	5.25	101
Dickinson	19,641	19,322	-1.62%	38	9,937	10,351	10,162	2.26%	44	-1.83%	60	2.80	39
Doniphan	7,808	7,865	0.73%	29	3,988	4,119	4,247	6.49%	28	3.11%	13	1.75	15
Douglas	93,381	112,123	20.07%	2	49,151	60,056	59,527	21.11%	4	-0.88%	46	1.75	15
Edwards	3,585	3,138	-12.47%	87	1,718	1,646	1,710	-0.47%	55	3.89%	9	3.15	52
Elk	3,321	3,077	-7.35%	64	1,367	1,411	1,347	-1.46%	60	-4.54%	87	4.20	79
Ellis	27,192	26,926	-0.98%	35	15,950	16,626	15,875	-0.47%	56	-4.52%	86	3.50	60
Ellsworth	6,544	6,332	-3.24%	42	2,805	3,099	3,384	20.64%	5	9.20%	1	1.40	6
Finney	37,038	39,097	5.56%	14	18,766	17,396	17,410	-7.23%	81	0.08%	37	2.45	26
Ford	30,750	33,783	9.86%	10	15,000	16,596	16,563	10.42%	18	-0.20%	40	1.40	6
Franklin	23,936	26,513	10.77%	4	12,885	12,824	13,150	2.06%	46	2.54%	17	1.75	15
Geary	28,424	24,174	-14.95%	93	9,587	10,933	10,797	12.62%	13	-1.24%	54	3.15	52
Gove	3,133	2,721	-13.15%	89	1,480	1,503	1,459	-1.42%	59	-2.93%	71	4.20	79
Graham	3,212	2,677	-16.66%	99	1,554	1,420	1,364	-12.23%	93	-3.94%	80	4.90	94
Grant	7,748	7,552	-2.53%	39	3,876	3,795	3,628	-6.40%	78	-4.40%	85	3.85	67
Gray	5,654	5,852	3.50%	18	2,697	3,162	3,048	13.01%	11	-3.61%	78	2.10	20
Greeley	1,643	1,331	-18.99%	104	854	747	695	-18.62%	104	-6.96%	98	5.25	101
Greenwood	7,898	7,067	-10.52%	76	3,224	3,331	3,429	6.36%	29	2.94%	15	2.45	26
Hamilton	2,466	2,594	5.19%	15	1,196	1,279	1,253	4.77%	33	-2.03%	63	2.10	20
Harper	6,653	5,952	-10.54%	77	3,018	3,257	3,257	7.92%	22	0.00%	38	2.80	39
Harvey	32,852	33,643	2.41%	22	15,472	16,791	17,415	12.56%	14	3.72%	12	1.40	6
Haskell	4,066	4,171	2.58%	21	2,034	2,145	2,086	2.56%	41	-2.75%	70	2.45	26
Hodgeman	2,143	2,071	-3.36%	45	971	936	922	-5.05%	72	-1.50%	58	3.50	60
Jackson	12,246	13,500	10.24%	7	6,290	6,583	6,634	5.47%	31	0.77%	32	1.75	15
Jefferson	17,553	18,848	7.38%	13	9,640	9,559	9,466	-1.80%	61	-0.97%	49	2.45	26
Jewell	4,034	3,324	-17.60%	100	2,074	2,088	1,998	-3.66%	68	-4.31%	82	4.55	83
Johnson	411,635	516,731	25.53%	1	236,962	268,230	279,144	17.80%	8	4.07%	8	1.05	1
Kearny	4,435	4,469	0.77%	28	2,123	1,957	1,952	-8.05%	86	-0.26%	41	3.15	52
Kingman	8,492	7,975	-6.09%	56	4,065	4,114	4,158	2.29%	43	1.07%	29	2.80	39
Kiowa	3,552	2,969	-16.41%	98	1,647	1,646	1,557	-5.46%	74	-5.41%	93	4.90	94
Labette	23,232	22,203	-4.43%	48	10,158	10,087	10,109	-0.48%	57	0.22%	36	2.80	39
Lane	2,220	1,797	-19.05%	105	1,103	1,059	1,018	-7.71%	83	-3.87%	79	4.55	83
Leavenworth	67,774	73,628	8.64%	12	26,567	30,316	31,233	17.56%	9	3.02%	14	1.05	1

APPENDIX 4. GROWTH CATEGORY STATISTICS

Area	Population				Employment			Long-Run Employment		Short-Run Employment		Growth Category	
	1996	2006	Change	Rank	1996	2004	2006	Change	Rank	Change	Rank	Score	Rank
Lincoln	3,540	3,396	-4.07%	46	1,738	1,767	1,744	0.35%	52	-1.30%	56	3.15	52
Linn	9,006	9,962	10.62%	5	3,083	4,398	4,566	48.10%	1	3.82%	11	1.05	1
Logan	3,146	2,675	-14.97%	94	1,565	1,531	1,465	-6.39%	77	-4.31%	83	4.55	83
Lyon	35,632	35,369	-0.74%	33	18,904	19,269	19,386	2.55%	42	0.61%	34	2.10	20
McPherson	28,875	29,380	1.75%	24	15,573	15,904	17,249	10.76%	17	8.46%	2	1.40	6
Marion	13,640	12,760	-6.45%	59	6,830	6,448	6,483	-5.08%	73	0.54%	35	3.15	52
Marshall	11,276	10,349	-8.22%	65	5,803	5,832	5,658	-2.50%	63	-2.98%	72	3.85	67
Meade	4,520	4,561	0.91%	25	2,196	2,180	2,043	-6.97%	80	-6.28%	95	3.85	67
Miami	26,332	30,900	17.35%	3	12,844	14,921	15,581	21.31%	3	4.42%	6	1.05	1
Mitchell	7,101	6,299	-11.29%	79	3,561	3,431	3,264	-8.34%	87	-4.87%	91	4.90	94
Montgomery	37,146	34,692	-6.61%	60	17,052	15,560	16,342	-4.16%	70	5.03%	4	2.80	39
Morris	6,252	6,046	-3.29%	43	3,019	2,949	2,759	-8.61%	89	-6.44%	97	4.55	83
Morton	3,440	3,138	-8.78%	67	1,730	1,667	1,651	-4.57%	71	-0.96%	48	3.85	67
Nemaha	10,713	10,374	-3.16%	41	5,544	5,216	5,135	-7.38%	82	-1.55%	59	3.15	52
Neosho	17,109	16,298	-4.74%	50	8,532	8,574	8,277	-2.99%	65	-3.46%	75	3.85	67
Ness	3,583	2,946	-17.78%	102	1,872	1,720	1,621	-13.41%	97	-5.76%	94	5.25	101
Norton	5,996	5,584	-6.87%	62	3,036	2,580	2,620	-13.70%	98	1.55%	24	3.50	60
Osage	16,372	16,958	3.58%	17	8,157	8,521	8,419	3.21%	39	-1.20%	52	2.10	20
Osborne	4,681	3,978	-15.02%	95	2,318	2,225	2,243	-3.24%	66	0.81%	31	3.85	67
Ottawa	5,941	6,168	3.82%	16	2,966	3,268	3,315	11.77%	16	1.44%	25	1.40	6
Pawnee	7,442	6,515	-12.46%	86	3,553	3,616	3,695	4.00%	37	2.18%	20	2.80	39
Phillips	6,206	5,444	-12.28%	85	3,176	3,127	2,928	-7.81%	84	-6.36%	96	4.90	94
Pottawatomie	17,385	19,220	10.56%	6	9,853	10,444	10,682	8.41%	20	2.28%	19	1.05	1
Pratt	9,763	9,436	-3.35%	44	4,947	5,248	5,213	5.38%	32	-0.67%	45	2.80	39
Rawlins	3,210	2,643	-17.66%	101	1,595	1,334	1,309	-17.93%	103	-1.87%	61	4.55	83
Reno	63,826	63,706	-0.19%	31	31,863	31,335	31,600	-0.83%	58	0.85%	30	2.45	26
Republic	6,133	5,033	-17.94%	103	3,161	2,761	2,663	-15.75%	102	-3.55%	77	4.90	94
Rice	10,765	10,295	-4.37%	47	4,622	5,248	5,185	12.18%	15	-1.20%	53	2.45	26
Riley	65,477	62,527	-4.51%	49	29,035	33,496	33,700	16.07%	10	0.61%	33	2.10	20
Rooks	5,883	5,290	-10.08%	73	2,929	2,575	2,519	-14.00%	99	-2.17%	66	4.55	83
Rush	3,671	3,317	-9.64%	71	1,826	1,647	1,605	-12.10%	92	-2.55%	68	4.55	83
Russell	7,656	6,740	-11.96%	83	3,591	3,326	3,258	-9.27%	90	-2.04%	64	4.55	83
Saline	53,140	54,170	1.94%	23	29,337	29,363	29,920	1.99%	48	1.90%	23	2.45	26
Scott	5,183	4,643	-10.42%	75	2,640	2,853	2,723	3.14%	40	-4.56%	88	3.85	67
Sedgwick	432,773	470,895	8.81%	11	216,998	225,479	234,182	7.92%	23	3.86%	10	1.40	6
Seward	21,241	23,404	10.18%	8	10,272	10,013	9,885	-3.77%	69	-1.28%	55	2.80	39
Shawnee	168,236	172,693	2.65%	19	87,037	87,964	86,809	-0.26%	54	-1.31%	57	2.45	26
Sheridan	2,863	2,600	-9.19%	69	1,506	1,520	1,473	-2.19%	62	-3.09%	73	3.85	67
Sherman	6,865	5,981	-12.88%	88	3,941	3,511	2,819	-28.47%	105	-19.71%	105	5.25	101
Smith	4,757	4,024	-15.41%	97	2,401	2,282	2,105	-12.33%	94	-7.76%	102	5.25	101
Stafford	5,053	4,435	-12.23%	84	2,424	2,202	2,124	-12.38%	95	-3.54%	76	4.55	83
Stanton	2,408	2,232	-7.31%	63	1,093	1,142	1,095	0.18%	53	-4.12%	81	3.50	60
Stevens	5,331	5,287	-0.83%	34	2,662	2,381	2,278	-14.43%	100	-4.33%	84	3.85	67
Sumner	26,019	24,441	-6.06%	55	12,389	11,443	11,680	-5.72%	75	2.07%	21	2.80	39
Thomas	8,473	7,468	-11.86%	82	4,604	4,225	4,220	-8.34%	88	-0.12%	39	3.85	67
Trego	3,522	2,993	-15.02%	96	1,944	1,669	1,663	-14.45%	101	-0.36%	42	4.20	79
Wabaunsee	6,839	6,895	0.82%	27	3,339	3,580	3,545	6.17%	30	-0.98%	51	2.45	26
Wallace	1,798	1,557	-13.40%	90	846	941	875	3.43%	38	-7.01%	99	4.20	79
Washington	6,713	5,944	-11.46%	81	3,431	3,401	3,219	-6.18%	76	-5.35%	92	4.55	83
Wichita	2,678	2,288	-14.56%	92	1,223	1,344	1,241	1.47%	50	-7.66%	101	4.55	83
Wilson	10,418	9,889	-5.08%	52	5,175	4,971	5,267	1.78%	49	5.95%	3	2.45	26
Woodson	3,958	3,507	-11.39%	80	1,495	1,643	1,601	7.09%	25	-2.56%	69	3.50	60
Wyandotte	157,650	155,509	-1.36%	37	69,951	66,267	67,548	-3.44%	67	1.93%	22	2.80	39

APPENDIX 5. DEPENDENT POPULATION CATEGORY STATISTICS

Area	Working Age (20-64)			Elderly (65 and over)			Dependent Category	
	Population	Percent	Rank	Population	Percent	Rank	Score	Rank
Allen	7,761	56.74%	35	2,404	17.58%	52	1.00	37
Anderson	4,399	54.64%	61	1,522	18.90%	64	1.40	61
Atchison	9,370	55.96%	44	2,603	15.54%	34	1.00	37
Barber	2,808	56.45%	39	1,002	20.14%	70	1.20	52
Barton	15,284	55.56%	52	4,851	17.63%	54	1.20	52
Bourbon	8,313	55.61%	50	2,514	16.82%	44	1.20	52
Brown	5,642	55.12%	56	1,879	18.36%	60	1.20	52
Butler	37,589	59.53%	10	7,825	12.39%	17	0.40	1
Chase	1,711	55.73%	48	508	16.55%	41	1.00	37
Chautauqua	2,102	53.17%	82	948	23.98%	93	1.80	81
Cherokee	12,414	57.87%	26	3,235	15.08%	30	0.80	21
Cheyenne	1,497	51.43%	103	741	25.46%	98	2.00	94
Clark	1,144	51.86%	99	482	21.85%	83	1.80	81
Clay	4,872	56.49%	38	1,721	19.95%	68	1.20	52
Cloud	5,095	53.11%	83	2,157	22.48%	86	1.80	81
Coffey	5,158	59.28%	13	1,337	15.37%	33	0.60	11
Comanche	986	52.34%	95	477	25.32%	97	2.00	94
Cowley	19,980	57.20%	30	5,124	14.67%	26	0.80	21
Crawford	22,473	59.05%	14	5,512	14.48%	24	0.60	11
Decatur	1,610	51.60%	101	811	25.99%	100	2.00	94
Dickinson	11,042	57.15%	31	3,479	18.01%	58	1.00	37
Doniphan	4,499	57.20%	29	1,226	15.59%	36	0.80	21
Douglas	73,760	65.78%	1	9,942	8.87%	4	0.40	1
Edwards	1,710	54.49%	64	599	19.09%	65	1.60	71
Elk	1,647	53.53%	75	732	23.79%	92	1.80	81
Ellis	16,185	60.11%	9	3,988	14.81%	27	0.60	11
Ellsworth	3,884	61.34%	5	1,189	18.78%	63	0.80	21
Finney	21,281	54.43%	66	2,946	7.54%	1	1.00	37
Ford	18,577	54.99%	58	3,485	10.32%	7	0.80	21
Franklin	15,649	59.02%	15	3,499	13.20%	19	0.40	1
Geary	13,379	55.34%	54	2,682	11.09%	11	0.80	21
Gove	1,366	50.20%	105	684	25.14%	96	2.00	94
Graham	1,419	53.01%	85	716	26.75%	103	2.00	94
Grant	4,211	55.76%	47	806	10.67%	9	0.80	21
Gray	3,272	55.91%	45	695	11.88%	15	0.80	21
Greeley	688	51.69%	100	242	18.18%	59	1.60	71
Greenwood	3,894	55.10%	57	1,519	21.49%	79	1.40	61
Hamilton	1,370	52.81%	91	456	17.58%	53	1.60	71
Harper	3,222	54.13%	71	1,332	22.38%	85	1.80	81
Harvey	19,032	56.57%	37	5,605	16.66%	43	1.00	37
Haskell	2,281	54.69%	60	446	10.69%	10	0.80	21
Hodgeman	1,169	56.45%	40	372	17.96%	57	1.00	37
Jackson	7,880	58.37%	20	1,906	14.12%	23	0.60	11
Jefferson	11,452	60.76%	7	2,644	14.03%	22	0.60	11
Jewell	1,771	53.28%	80	860	25.87%	99	1.80	81
Johnson	319,784	61.89%	4	52,274	10.12%	6	0.40	1
Kearny	2,429	54.35%	67	524	11.73%	14	1.00	37
Kingman	4,317	54.13%	72	1,595	20.00%	69	1.60	71
Kiowa	1,560	52.54%	92	674	22.70%	88	2.00	94
Labette	12,725	57.31%	28	3,578	16.11%	39	0.80	21
Lane	994	55.31%	55	387	21.54%	80	1.40	61
Leavenworth	46,226	62.78%	3	7,343	9.97%	5	0.40	1

APPENDIX 5. DEPENDENT POPULATION CATEGORY STATISTICS

Area	Working Age (20-64)			Elderly (65 and over)			Dependent Category	
	Population	Percent	Rank	Population	Percent	Rank	Score	Rank
Lincoln	1,909	56.21%	43	703	20.70%	74	1.40	61
Linn	5,780	58.02%	24	1,748	17.55%	51	1.00	37
Logan	1,431	53.50%	76	573	21.42%	78	1.60	71
Lyon	20,843	58.93%	17	4,319	12.21%	16	0.40	1
McPherson	16,720	56.91%	34	5,018	17.08%	48	1.00	37
Marion	6,924	54.26%	69	2,641	20.70%	73	1.60	71
Marshall	5,690	54.98%	59	2,190	21.16%	77	1.40	61
Meade	2,415	52.95%	86	781	17.12%	49	1.60	71
Miami	18,945	61.31%	6	3,527	11.41%	13	0.40	1
Mitchell	3,335	52.94%	87	1,329	21.10%	76	1.80	81
Montgomery	19,379	55.86%	46	6,127	17.66%	55	1.20	52
Morris	3,358	55.54%	53	1,245	20.59%	72	1.40	61
Morton	1,677	53.44%	77	478	15.23%	32	1.20	52
Nemaha	5,336	51.44%	102	2,121	20.45%	71	1.80	81
Neosho	9,174	56.29%	42	2,832	17.38%	50	1.00	37
Ness	1,532	52.00%	97	788	26.75%	104	2.00	94
Norton	3,364	60.24%	8	989	17.71%	56	0.80	21
Osage	10,008	59.02%	16	2,570	15.16%	31	0.60	11
Osborne	2,086	52.44%	94	981	24.66%	95	2.00	94
Ottawa	3,577	57.99%	25	1,042	16.89%	46	1.00	37
Pawnee	3,792	58.20%	21	1,097	16.84%	45	0.80	21
Phillips	2,909	53.43%	78	1,216	22.34%	84	1.60	71
Pottawatomie	11,162	58.07%	22	2,390	12.43%	18	0.60	11
Pratt	5,324	56.42%	41	1,748	18.52%	61	1.00	37
Rawlins	1,398	52.89%	89	688	26.03%	101	2.00	94
Reno	36,852	57.85%	27	10,576	16.60%	42	0.80	21
Republic	2,664	52.93%	88	1,335	26.52%	102	2.00	94
Rice	5,722	55.58%	51	1,746	16.96%	47	1.20	52
Riley	39,733	63.55%	2	5,126	8.20%	2	0.40	1
Rooks	2,874	54.33%	68	1,110	20.98%	75	1.60	71
Rush	1,776	53.54%	74	807	24.33%	94	1.80	81
Russell	3,670	54.45%	65	1,575	23.37%	90	1.80	81
Saline	31,620	58.37%	19	7,861	14.51%	25	0.60	11
Scott	2,644	56.95%	33	747	16.09%	38	0.80	21
Sedgwick	276,310	58.68%	18	53,294	11.32%	12	0.40	1
Seward	12,768	54.55%	63	1,981	8.46%	3	0.80	21
Shawnee	102,656	59.44%	11	23,747	13.75%	21	0.40	1
Sheridan	1,374	52.85%	90	564	21.69%	82	1.80	81
Sherman	3,182	53.20%	81	1,173	19.61%	67	1.60	71
Smith	2,060	51.19%	104	1,128	28.03%	105	2.00	94
Stafford	2,330	52.54%	93	962	21.69%	81	1.80	81
Stanton	1,163	52.11%	96	347	15.55%	35	1.40	61
Stevens	2,865	54.19%	70	709	13.41%	20	1.00	37
Sumner	13,935	57.01%	32	3,639	14.89%	28	0.80	21
Thomas	4,076	54.58%	62	1,126	15.08%	29	1.00	37
Trego	1,597	53.36%	79	690	23.05%	89	1.80	81
Wabaunsee	4,093	59.36%	12	1,094	15.87%	37	0.60	11
Wallace	836	53.69%	73	292	18.75%	62	1.40	61
Washington	3,084	51.88%	98	1,403	23.60%	91	2.00	94
Wichita	1,215	53.10%	84	376	16.43%	40	1.20	52
Wilson	5,502	55.64%	49	1,899	19.20%	66	1.40	61
Woodson	1,990	56.74%	36	792	22.58%	87	1.40	61
Wyandotte	90,269	58.05%	23	16,391	10.54%	8	0.60	11

KANSAS, INC.

Created by the Legislature in 1986, Kansas, Inc. is an independent, objective, and non-partisan organization designed to conduct economic development research and analysis with the goal of crafting policies and recommendations to insure the state's ongoing competitiveness for economic growth. To attain our mission, Kansas, Inc. undertakes these primary activities: 1) Identifying, building, and promoting a Strategic Plan for economic development efforts in the State of Kansas; 2) To complement the Strategic Plan, Kansas, Inc. develops and implements a proactive and aggressive research agenda, which is used to identify and promote sound economic development strategies and policies; 3) Through collaboration and outreach with economic development entities and other potential partners, Kansas, Inc. conducts evaluation reviews and provides oversight of economic development programs to benchmark development efforts in the State of Kansas.

Co-Chaired by the Governor, Kansas, Inc. is governed by a 17-member Board of Directors. Board members, as mandated by legislation, include four members of Legislative leadership, a representative from the Board of Regents, the Secretary of Commerce, the Commanding General of the Kansas Cavalry, a representative from labor, and eight other members from the private sector representing key Kansas industrial sectors. Private sector members are appointed by the Governor and confirmed by the Kansas Senate.

Through analysis and open dialogue, Kansas, Inc. identifies policy options and builds the consensus essential for concerted action on vital economic issues. Kansas, Inc. is designed to be a public-private partnership with expectations that state investments are leveraged with other funds to maintain a strong research portfolio.

BOARD OF DIRECTORS

CO-CHAIRS

Governor Kathleen Sebelius
Topeka

Gene Argo
American Rodeo Company, Hays

MEMBERS

Patti Bossert
Key Staffing, Topeka

Rep. Tom Burroughs
State Representative, Kansas City

Rep. Lana Gordon
State Representative, Topeka

Donna Johnson
Pinnacle Technology, Lawrence

Sen. Laura Kelly
State Senator, Topeka

Secretary David Kerr
Kansas Department of Commerce, Topeka

Wil Leiker
AFL-CIO, Topeka

Lawrence L. McCants
First National Bank, Goodland

Sen. Stephen Morris
Senate President, Hugoton

John Pilla
Spirit AeroSystems, Wichita

Reginald Robinson
Kansas Board of Regents, Topeka

Donald P. Schnacke
Donald P. Schnacke, P.A., Topeka

Stephen L. Waite
Kansas Cavalry, El Dorado

KANSAS, INC. STAFF

Stan R. Ahlerich
President

Jacquelyn Koehler
Policy Analyst

Debby Fitzhugh
Director of Operations

Daniel Korber
Sr. Research Analyst



632 SW Van Buren, Suite 100

Topeka, KS 66603

(785) 296-1460

(785) 296-1463 (fax)

www.kansasinc.org

ksinc@ink.org